

For Research Use Only

PGAM2 Polyclonal antibody

Catalog Number: 25518-1-AP



Basic Information

Catalog Number: 25518-1-AP	GenBank Accession Number: NM_000290	Purification Method: Antigen affinity purification
Size: 150ul , Concentration: 500 µg/ml by Nanodrop and 300 µg/ml by Bradford method using BSA as the standard;	GeneID (NCBI): 5224	Recommended Dilutions: WB 1:500-1:1000
Source: Rabbit	Full Name: phosphoglycerate mutase 2 (muscle)	
Isotype: IgG	Calculated MW: 28 kDa	
	Observed MW: 29 kDa	

Applications

Tested Applications: WB, ELISA	Positive Controls: WB : mouse testis tissue,
Species Specificity: human, mouse	

Background Information

Phosphoglycerate mutase (PGAM), an important enzyme in the glycolytic pathway, catalyzes the transfer of a phosphate group between the 2 and the 3 positions of glyceric acid. The muscle-specific isoform (type M, PGAM2) of phosphoglycerate mutase (PGAM) is a housekeeping enzyme and it catalyzes the conversion of 3-phosphoglycerate into 2-phosphoglycerate in the glycolysis process to release energy. It is encoded by the Pgam2 gene. In addition, it is demonstrated that PGAM2 locates both in cytoplasm and nuclei, and takes part in the glycometabolism process of cytoplasm and nuclei (PMID: 18499067). Defects in PGAM2 are the cause of glycogen storage disease type 10 (GSD10). This antibody is specific for PGAM2.

Storage

Storage:
Store at -20°C. Stable for one year after shipment.
Storage Buffer:
PBS with 0.02% sodium azide and 50% glycerol pH 7.3.
Aliquoting is unnecessary for -20°C storage

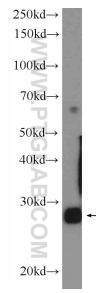
For technical support and original validation data for this product please contact:

T: 1 (888) 4PTGLAB (1-888-478-4522) (toll free in USA), or 1(312) 455-8498 (outside USA)

E: proteintech@ptglab.com
W: ptglab.com

This product is exclusively available under Proteintech Group brand and is not available to purchase from any other manufacturer.

Selected Validation Data



mouse testis tissue were subjected to SDS PAGE followed by western blot with 25518-1-AP (PGAM2 Antibody) at dilution of 1:600 incubated at room temperature for 1.5 hours.