

For Research Use Only

PAI-1 Polyclonal ANTIBODY

Catalog Number: 25522-1-AP



Basic Information

Catalog Number:

25522-1-AP

Size:

150UL, Concentration: 193 µg/ml by Bradford method using BSA as the standard;

Source:

Rabbit

Isotype:

IgG

Immunogen Catalog Number:

AG22411

GenBank Accession Number:

BC010860

GeneID (NCBI):

5054

Full Name:

serpin peptidase inhibitor, clade E (nexin, plasminogen activator inhibitor type 1), member 1

Calculated MW:

402 aa, 45 kDa

Purification Method:

Antigen affinity purification

Recommended Dilutions:

WB 1:200-1:1000

IF 1:10-1:100

Applications

Tested Applications:

IF, WB, ELISA

Species Specificity:

human, mouse

Positive Controls:

WB: RAW 264.7 cells, human plasma tissue

IF: HepG2 cells,

Background Information

SERPINE1, also named as Plasminogen activator inhibitor type 1 (PAI-1), is a member of the serine protease inhibitor (SERPIN) superfamily. PAI-1 is the principal inhibitor of tissue plasminogen activator (tPA) and uPA, and hence is an inhibitor of fibrinolysis. Defects in this gene are the cause of plasminogen activator inhibitor-1 deficiency (PAI-1 deficiency), and high concentrations of the gene product are associated with thrombophilia.

Storage

Storage:

Store at -20°C. Stable for one year after shipment.

Storage Buffer:

PBS with 0.1% sodium azide and 50% glycerol pH 7.3.

Aliquoting is unnecessary for -20°C storage

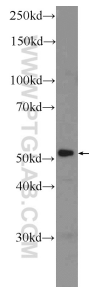
For technical support and original validation data for this product please contact:

T: 1 (888) 4PTGLAB (1-888-478-4522) (toll free in USA), or 1(312) 455-8498 (outside USA)

E: proteintech@ptglab.com
W: ptglab.com

This product is exclusively available under Proteintech Group brand and is not available to purchase from any other manufacturer.

Selected Validation Data



RAW 264.7 cells were subjected to SDS PAGE followed by western blot with 25522-1-AP (PAI-1) antibody at dilution of 1:300 incubated at room temperature for 1.5 hours.