

For Research Use Only

# MCP1 Polyclonal antibody

Catalog Number: 25542-1-AP **15 Publications**



## Basic Information

|   |   |  |
|---|---|--|
| <b>Catalog Number:</b><br>25542-1-AP  | <b>GenBank Accession Number:</b><br>BC009716        | <b>Purification Method:</b><br>Antigen affinity purification     |
| <b>Size:</b><br>150UL, Concentration: 287 µg/ml by Bradford method using BSA as the standard; | <b>GeneID (NCBI):</b><br>6347                       | <b>Recommended Dilutions:</b><br>IHC 1:50-1:500<br>IF 1:20-1:200 |
| <b>Source:</b><br>Rabbit  | <b>Full Name:</b><br>chemokine (C-C motif) ligand 2 |  |
| <b>Isotype:</b><br>IgG  | <b>Calculated MW:</b><br>99 aa, 11 kDa              |  |
| <b>Immunogen Catalog Number:</b><br>AG10601   |   |  |

## Applications

|  |  |
|--|--|
| <b>Tested Applications:</b><br>FC, IF, IHC, ELISA  | <b>Positive Controls:</b><br>IHC : human breast cancer tissue, human pancreas cancer tissue, human liver cancer tissue<br>IF : HeLa cells, |
| <b>Cited Applications:</b><br>IF, IHC  |  |
| <b>Species Specificity:</b><br>human   |  |
| <b>Cited Species:</b><br>human, mouse, rat   |  |
| <b>Note-IHC: suggested antigen retrieval with TE buffer pH 9.0; (*) Alternatively, antigen retrieval may be performed with citrate buffer pH 6.0</b> |  |

## Background Information

### Notable Publications

| Author          | Pubmed ID | Journal           | Application |
|-----------------|-----------|-------------------|-------------|
| Yun Zhu         | 31660067  | Theranostics      | IHC         |
| Qian Zhang      | 31593304  | J Periodontal Res |             |
| Chin-Chuan Chen | 31121128  | Transl Res        | WB          |

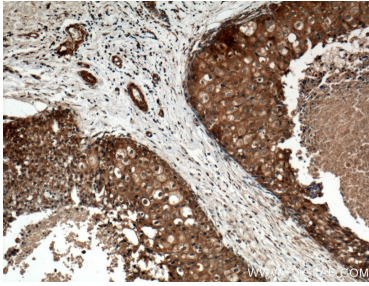
## Storage

**Storage:**  
Store at -20°C. Stable for one year after shipment.  
**Storage Buffer:**  
PBS with 0.1% sodium azide and 50% glycerol pH 7.3.  
Aliquoting is unnecessary for -20°C storage

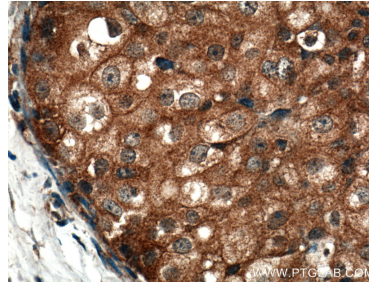
For technical support and original validation data for this product please contact:  
T: 1 (888) 4PTGLAB (1-888-478-4522) (toll free in USA), or 1(312) 455-8498 (outside USA)  
E: proteintech@ptglab.com  
W: ptglab.com

This product is exclusively available under Proteintech Group brand and is not available to purchase from any other manufacturer.

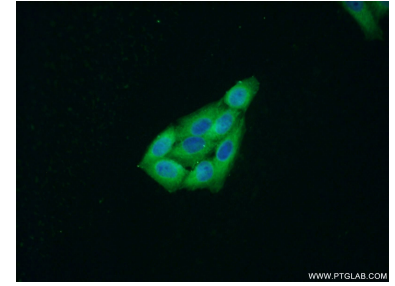
## Selected Validation Data



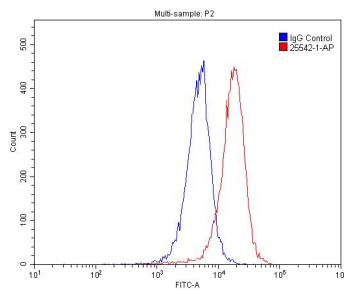
Immunohistochemical analysis of paraffin-embedded human breast cancer tissue slide using 25542-1-AP (MCP1 antibody) at dilution of 1:200 (under 10x lens).



Immunohistochemical analysis of paraffin-embedded human breast cancer tissue slide using 25542-1-AP (MCP1 antibody) at dilution of 1:200 (under 40x lens).



Immunofluorescent analysis of HeLa cells using 25542-1-AP (MCP1 antibody) at dilution of 1:50 and Alexa Fluor 488-conjugated AffiniPure Goat Anti-Rabbit IgG(H+L).



$1 \times 10^6$  A549 cells were stained with 0.2ug MCP1 antibody (25542-1-AP, red) and control antibody (blue). Fixed with 4% PFA blocked with 3% BSA (30 min). Alexa Fluor 488-conjugated AffiniPure Goat Anti-Rabbit IgG(H+L) with dilution 1:1500.