

For Research Use Only

PNLDC1 Polyclonal ANTIBODY



Catalog Number: 25559-1-AP

1 Publications

Basic Information

Catalog Number:
25559-1-AP

Size:
45 µg/150 µl

Source:
Rabbit

Isotype:
IgG

Purification Method:
Antigen affinity purification

Immunogen Catalog Number:
AG22074

GenBank Accession Number:
BC112246

GeneID (NCBI):
154197

Full Name:
poly(A)-specific ribonuclease (PARN)-like
domain containing 1

Calculated MW:
520aa, 60 kDa

Observed MW:
55-60 kDa

Recommended Dilutions:

WB 1:500-1:1000

IHC 1:20-1:200

Applications

Tested Applications:

IHC, WB, ELISA

Cited Applications:

WB

Species Specificity:

human

Cited Species:

silkworm

Positive Controls:

WB : Raji cells;

IHC : human testis tissue;

**Note: suggested antigen retrieval with TE
buffer pH 9.0; (*) Alternatively, antigen
retrieval may be performed with citrate
buffer pH 6.0**

Background Information

PNLDC1, also named as Poly(A)-specific ribonuclease PARN-like domain-containing protein 1, is a 520 amino acid protein, which belongs to the CAF1 family. PNLDC1 as a membrane protein localizes in the membrane.

Notable Publications

Author	Pubmed ID	Journal	Application
Natsuko Izumi	26919431	Cell	WB

Storage

Storage:

Store at -20°C. Stable for one year after shipment.

Storage Buffer:

PBS with 0.1% sodium azide and 50% glycerol pH 7.3.

Aliquoting is unnecessary for -20°C storage

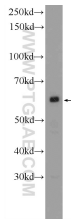
For technical support and original validation data for this product please contact:

T: 1 (888) 4PTGLAB (1-888-478-4522) (toll free in USA), or 1(312) 455-8498 (outside USA)

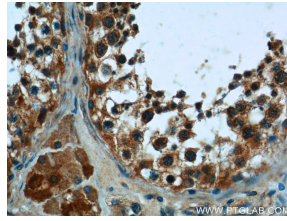
E: proteintech@ptglab.com
W: ptglab.com

This product is exclusively available under Proteintech Group brand and is not available to purchase from any other manufacturer.

Selected Validation Data



Raji cells were subjected to SDS PAGE followed by western blot with 25559-1-AP(PNLDC1 Antibody) at dilution of 1:600 incubated at room temperature for 1.5 hours



Immunohistochemistry of paraffin-embedded human testis tissue slide using 25559-1-AP(PNLDC1 Antibody) at dilution of 1:50 (under 40x lens)