

For Research Use Only

BHLHE22 Polyclonal ANTIBODY



Catalog Number: 25622-1-AP **1 Publications**

Basic Information

Catalog Number: 25622-1-AP
Size: 150UL, Concentration: 293 µg/ml by Bradford method using BSA as the standard;
Source: Rabbit
Isotype: IgG
Immunogen Catalog Number: AG20966

GenBank Accession Number: BC156671
GeneID (NCBI): 27319
Full Name: basic helix-loop-helix family, member e22
Calculated MW: 381 aa, 37 kDa
Observed MW: 37 kDa

Purification Method: Antigen affinity purification
Recommended Dilutions: WB 1:200-1:1000
IF 1:10-1:100

Applications

Tested Applications: IF, WB, ELISA
Cited Applications: WB
Species Specificity: human, mouse
Cited Species: goat

Positive Controls:
WB : SH-SY5Y cells,
IF : SH-SY5Y cells,

Background Information

Notable Publications

Author	Pubmed ID	Journal	Application
Xiaopeng An	28704526	PLoS One	WB

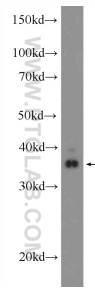
Storage

Storage: Store at -20°C. Stable for one year after shipment.
Storage Buffer: PBS with 0.1% sodium azide and 50% glycerol pH 7.3.
Aliquoting is unnecessary for -20°C storage

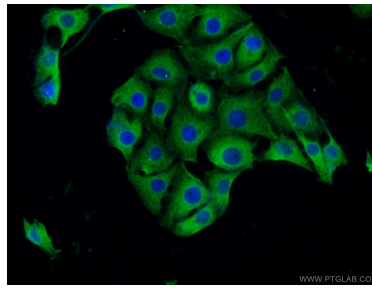
For technical support and original validation data for this product please contact:
T: 1 (888) 4PTGLAB (1-888-478-4522) (toll free in USA), or 1(312) 455-8498 (outside USA)
E: proteintech@ptglab.com
W: ptglab.com

This product is exclusively available under Proteintech Group brand and is not available to purchase from any other manufacturer.

Selected Validation Data



SH-SY5Y cells were subjected to SDS PAGE followed by western blot with 25622-1-AP (BHLHE22 Antibody) at dilution of 1:300 incubated at room temperature for 1.5 hours.



Immunofluorescent analysis of SH-SY5Y cells using 25622-1-AP (BHLHE22 antibody) at dilution of 1:25 and Alexa Fluor 488-conjugated AffiniPure Goat Anti-Rabbit IgG(H+L).