

RB1 Polyclonal ANTIBODY

Catalog Number: 25628-1-AP

3 Publications

Basic Information

Catalog Number:
25628-1-AP

Size:
28 µg/150 µl

Source:
Rabbit

Isotype:
IgG

Purification Method:
Antigen affinity purification

Immunogen Catalog Number:
AG22578

GenBank Accession Number:
BC039060

GeneID (NCBI):
5925

Full Name:
retinoblastoma 1

Calculated MW:
928aa, 106 kDa

Observed MW:
106 kDa

Recommended Dilutions:

WB 1:200-1:1000

IP 0.5-4.0 µg for IP and 1:200-1:1000 for WB

IF 1:20-1:200

Applications

Tested Applications:

IF, IP, WB, ELISA

Cited Applications:

IF, WB

Species Specificity:

human

Cited Species:

human

Note: suggested antigen retrieval with TE buffer pH 9.0; (*) Alternatively, antigen retrieval may be performed with citrate buffer pH 6.0

Positive Controls:

WB : Jurkat cells; A431 cells

IP : Jurkat cells;

IF : HepG2 cells;

Background Information

Notable Publications

Author	Pubmed ID	Journal	Application
Kun Lu	29285195	Oncol Lett	IF
Da-Peng Yun	29399702	Oncol Rep	WB
Yudi Xiong	30784916	Biomed Pharmacother	WB

Storage

Storage:

Store at -20°C. Stable for one year after shipment.

Storage Buffer:

PBS with 0.1% sodium azide and 50% glycerol pH 7.3.

Aliquoting is unnecessary for -20°C storage

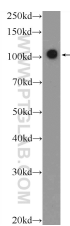
For technical support and original validation data for this product please contact:

T: 1 (888) 4PTGLAB (1-888-478-4522) (toll free in USA), or 1(312) 455-8498 (outside USA)

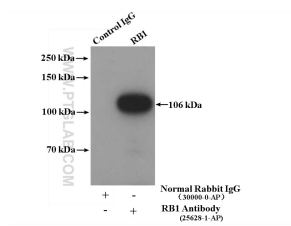
E: proteintech@ptglab.com
W: ptglab.com

This product is exclusively available under Proteintech Group brand and is not available to purchase from any other manufacturer.

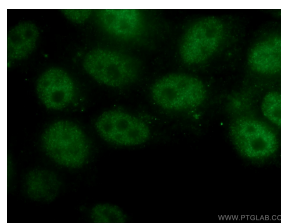
Selected Validation Data



Jurkat cells were subjected to SDS PAGE followed by western blot with 25628-1-AP (RB1 Antibody) at dilution of 1:300 incubated at room temperature for 1.5 hours



IP Result of anti-RB1 (IP:25628-1-AP, 4ug; Detection:25628-1-AP 1:300) with Jurkat cells lysate 3400ug.



Immunofluorescent analysis of HepG2 cells using 25628-1-AP(RB1 antibody) at dilution of 1:50 and Alexa Fluor 488-conjugated AffiniPure Goat Anti-Rabbit IgG(H+L)