

For Research Use Only

ADAM10 Polyclonal antibody

Catalog Number: 25900-1-AP

11 Publications



Basic Information

Catalog Number: 25900-1-AP	GenBank Accession Number: BC126253	Purification Method: Antigen affinity purification
Size: 150ul , Concentration: 300 µg/ml by Nanodrop and 200 µg/ml by Bradford method using BSA as the standard;	GeneID (NCBI): 102	Recommended Dilutions: WB 1:200-1:1000 IHC 1:50-1:500
Source: Rabbit	Full Name: ADAM metalloproteinase domain 10	
Isotype: IgG	Calculated MW: 748 aa, 84 kDa	
Immunogen Catalog Number: AG23078	Observed MW: 70 kDa, 90 kDa	

Applications

Tested Applications: IHC, WB, ELISA	Positive Controls: WB : A549 cells, NIH/3T3 cells, SW 1990 cells IHC : human lung cancer tissue, human pancreas cancer tissue
Cited Applications: IF, IHC, WB	
Species Specificity: human, mouse	
Cited Species: human, mouse, rat	
Note-IHC: suggested antigen retrieval with TE buffer pH 9.0; (*) Alternatively, antigen retrieval may be performed with citrate buffer pH 6.0	

Background Information

ADAM10, a member of the ADAM (a disintegrin and metalloprotease) family, is widely expressed in the brain, the spinal cord, and the visual system during development. MW of prenatally ADAM10 is 90 kDa and mature ADAM10 is 60-70 kDa (PMID: 24404179).

Notable Publications

Author	Pubmed ID	Journal	Application
Lina Sun	33043016	Front Cell Dev Biol	WB
Bo Wu	28703811	Cell Death Dis	WB, IF
Yao Zhang	30632006	Neurosci Bull	WB

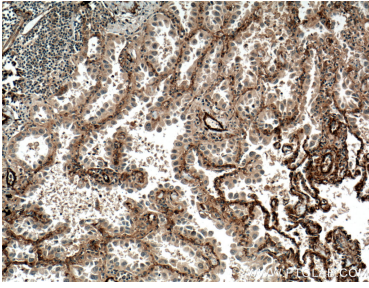
Storage

Storage:
Store at -20°C. Stable for one year after shipment.
Storage Buffer:
PBS with 0.02% sodium azide and 50% glycerol pH 7.3.
Aliquoting is unnecessary for -20°C storage

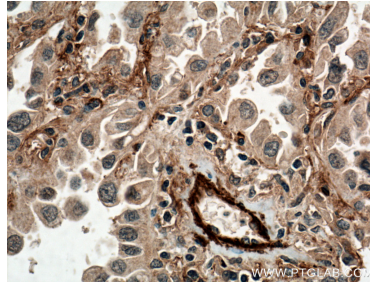
For technical support and original validation data for this product please contact:
T: 1 (888) 4PTGLAB (1-888-478-4522) (toll free in USA), or 1(312) 455-8498 (outside USA)
E: proteintech@ptglab.com
W: ptglab.com

This product is exclusively available under Proteintech Group brand and is not available to purchase from any other manufacturer.

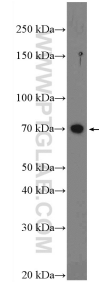
Selected Validation Data



Immunohistochemical analysis of paraffin-embedded human lung cancer tissue slide using 25900-1-AP (ADAM10 antibody) at dilution of 1:200 (under 10x lens. Heat mediated antigen retrieval with Tris-EDTA buffer (pH 9.0)).



Immunohistochemical analysis of paraffin-embedded human lung cancer tissue slide using 25900-1-AP (ADAM10 antibody) at dilution of 1:200 (under 40x lens. Heat mediated antigen retrieval with Tris-EDTA buffer (pH 9.0)).



A549 cells were subjected to SDS PAGE followed by western blot with 25900-1-AP (ADAM10 Antibody) at dilution of 1:300 incubated at room temperature for 1.5 hours.