

For Research Use Only

# LRRIQ1 Polyclonal antibody

Catalog Number: 26063-1-AP

1 Publications



## Basic Information

<b>Catalog Number:</b> 26063-1-AP	<b>GenBank Accession Number:</b> BC005399	<b>Purification Method:</b> Antigen affinity purification
<b>Size:</b> 150ul , Concentration: 800 ug/ml by Nanodrop;	<b>GeneID (NCBI):</b> 84125	<b>Recommended Dilutions:</b> WB 1:1000-1:6000 IHC 1:50-1:500
<b>Source:</b> Rabbit	<b>UNIPROT ID:</b> Q96JM4	
<b>Isotype:</b> IgG	<b>Full Name:</b> leucine-rich repeats and IQ motif containing 1	
<b>Immunogen Catalog Number:</b> AG22057	<b>Calculated MW:</b> 1722 aa, 199 kDa	
	<b>Observed MW:</b> 190-200 kDa	

## Applications

<b>Tested Applications:</b> WB, IHC, ELISA	<b>Positive Controls:</b>
<b>Cited Applications:</b> WB	<b>WB :</b> mouse brain tissue,
<b>Species Specificity:</b> human, mouse	<b>IHC :</b> human liver tissue,
<b>Cited Species:</b> mouse	
<b>Note-IHC: suggested antigen retrieval with TE buffer pH 9.0; (*) Alternatively, antigen retrieval may be performed with citrate buffer pH 6.0</b>	

## Background Information

LRRIQ1 (leucine-rich repeats and IQ motif containing 1), also named as KIAA1801, is known to be highly expressed in brain and testis tissue. The LRRIQ1 gene is conserved in chimpanzee, Rhesus monkey, dog, cow, mouse, rat, chicken, and zebrafish.

## Notable Publications

Author	Pubmed ID	Journal	Application
Chao Liu	37494937	Curr Biol	WB

## Storage

**Storage:**  
Store at -20°C. Stable for one year after shipment.  
**Storage Buffer:**  
PBS with 0.02% sodium azide and 50% glycerol pH 7.3.  
Aliquoting is unnecessary for -20°C storage

\*\*\* 20ul sizes contain 0.1% BSA

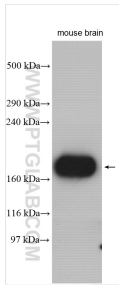
For technical support and original validation data for this product please contact:  
T: 1 (888) 4PTGLAB (1-888-478-4522) (toll free in USA), or 1(312) 455-8498 (outside USA)  
E: [proteintech@ptglab.com](mailto:proteintech@ptglab.com)  
W: [ptglab.com](http://ptglab.com)

This product is exclusively available under Proteintech Group brand and is not available to purchase from any other manufacturer.

## Selected Validation Data



Immunohistochemical analysis of paraffin-embedded human liver tissue slide using 26063-1-AP (LRRIQ1 Antibody) at dilution of 1:200 (under 40x lens).



mouse brain tissue were subjected to SDS PAGE followed by western blot with 26063-1-AP (LRRIQ1 antibody) at dilution of 1:3000 incubated at room temperature for 1.5 hours.