

For Research Use Only

# ABHD1 Polyclonal antibody

Catalog Number: 26091-1-AP

Featured Product

1 Publications



## Basic Information

**Catalog Number:**

26091-1-AP

**Size:**

150ul, Concentration: 450 ug/ml by Nanodrop and 293 ug/ml by Bradford method using BSA as the standard;

**Source:**

Rabbit

**Isotype:**

IgG

**Immunogen Catalog Number:**

AG23138

**GenBank Accession Number:**

BC039576

**GeneID (NCBI):**

84696

**UNIPROT ID:**

Q965EO

**Full Name:**

abhydrolase domain containing 1

**Calculated MW:**

405 aa, 45 kDa

**Observed MW:**

48 kDa

**Purification Method:**

Antigen affinity purification

**Recommended Dilutions:**

WB 1:200-1:500

## Applications

**Tested Applications:**

WB, ELISA

**Cited Applications:**

WB, IF

**Species Specificity:**

human, mouse

**Cited Species:**

human

**Positive Controls:**

WB : mouse heart tissue,

## Notable Publications

Author	Pubmed ID	Journal	Application
Xinyi Liu	39619568	J Diabetes Res	WB,IF

## Storage

**Storage:**

Store at -20°C. Stable for one year after shipment.

**Storage Buffer:**

PBS with 0.02% sodium azide and 50% glycerol pH 7.3.

Aliquoting is unnecessary for -20°C storage

\*\*\* 20ul sizes contain 0.1% BSA

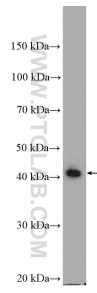
For technical support and original validation data for this product please contact:

T: 1 (888) 4PTGLAB (1-888-478-4522) (toll free in USA), or 1(312) 455-8498 (outside USA)

E: [proteintech@ptglab.com](mailto:proteintech@ptglab.com)  
W: [ptglab.com](http://ptglab.com)

This product is exclusively available under Proteintech Group brand and is not available to purchase from any other manufacturer.

## Selected Validation Data



mouse heart tissue were subjected to SDS PAGE followed by western blot with 26091-1-AP (ABHD1 Antibody) at dilution of 1:300 incubated at 4 degree celsius over night.