

For Research Use Only

SLC13A3 Polyclonal antibody

Catalog Number: 26184-1-AP

4 Publications



Basic Information

Catalog Number:

26184-1-AP

Size:

150ul, Concentration: 1200 ug/ml by Nanodrop and 480 ug/ml by Bradford method using BSA as the standard;

Source:

Rabbit

Isotype:

IgG

Immunogen Catalog Number:

AG24182

GenBank Accession Number:

BC035966

GeneID (NCBI):

64849

UNIPROT ID:

Q8WWT9

Full Name:

solute carrier family 13 (sodium-dependent dicarboxylate transporter), member 3

Calculated MW:

602 aa, 67 kDa

Observed MW:

65-70 kDa

Purification Method:

Antigen affinity purification

Recommended Dilutions:

IP: 0.5-4.0 ug for 1.0-3.0 mg of total protein lysate
IHC: 1:200-1:4000

Applications

Tested Applications:

IP, IHC, ELISA

Cited Applications:

WB, IHC, IF

Species Specificity:

human, mouse

Cited Species:

human, mouse, rat

Positive Controls:

IP: mouse kidney tissue,

IHC: human kidney tissue,

Note-IHC: suggested antigen retrieval with TE buffer pH 9.0; (*) Alternatively, antigen retrieval may be performed with citrate buffer pH 6.0

Background Information

SLC13A3, also named NADC3 and SDCT2, belongs to the SLC13A/DASS transporter (TC 2.A.47) family and NADC subfamily. SLC13A3 encodes the plasma membrane Na⁺/Dicarboxylate Cotransporter 3 (NaDC3), which imports inside the cell four to six carbon dicarboxylates as well as N-acetylaspartate (NAA). SLC13A3 is mainly expressed in kidney, but also in brain, liver, placenta and eye (PMID: 30635937).

Notable Publications

Author	Pubmed ID	Journal	Application
Daosheng Ai	39921427	Adv Sci (Weinh)	WB
Yizeng Fan	39809284	Cell Metab	WB, IHC
Chao Chen	39116875	Dev Cell	WB, IF

Storage

Storage:

Store at -20°C. Stable for one year after shipment.

Storage Buffer:

PBS with 0.02% sodium azide and 50% glycerol, pH7.3

Aliquoting is unnecessary for -20°C storage

*** 20ul sizes contain 0.1% BSA

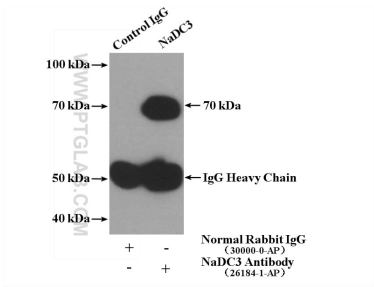
For technical support and original validation data for this product please contact:

T: 1 (888) 4PTGLAB (1-888-478-4522) (toll free in USA), or 1(312) 455-8498 (outside USA)

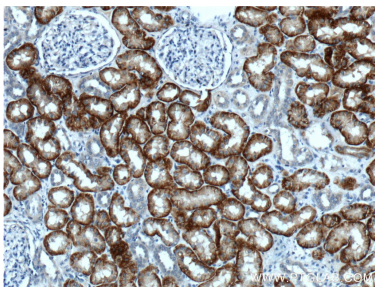
E: proteintech@ptglab.com
W: ptglab.com

This product is exclusively available under Proteintech Group brand and is not available to purchase from any other manufacturer.

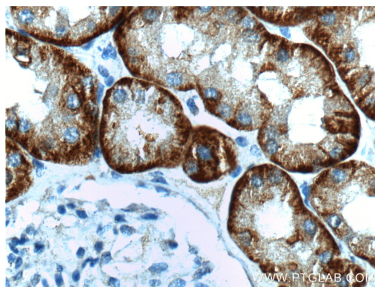
Selected Validation Data



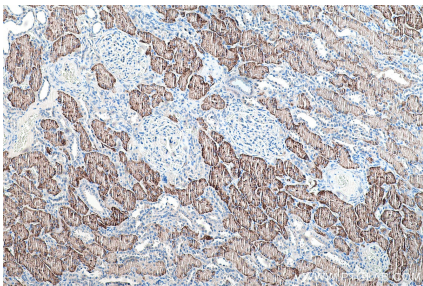
IP result of anti-SLC13A3 (IP:26184-1-AP, 4ug; Detection:26184-1-AP 1:500) with mouse kidney tissue lysate 4000ug.



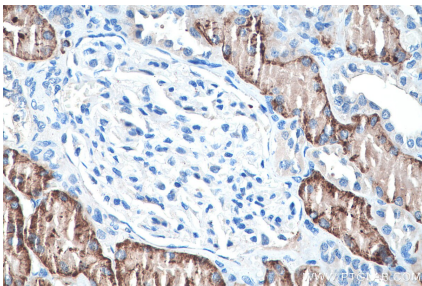
Immunohistochemical analysis of paraffin-embedded human kidney tissue slide using 26184-1-AP (NaDC3 antibody at dilution of 1:200 (under 10x lens).



Immunohistochemical analysis of paraffin-embedded human kidney tissue slide using 26184-1-AP (NaDC3 antibody at dilution of 1:200 (under 40x lens).



Immunohistochemical analysis of paraffin-embedded human kidney tissue slide using 26184-1-AP (SLC13A3 antibody) at dilution of 1:4000 (under 10x lens). Heat mediated antigen retrieval with Tris-EDTA buffer (pH 9.0).



Immunohistochemical analysis of paraffin-embedded human kidney tissue slide using 26184-1-AP (SLC13A3 antibody) at dilution of 1:4000 (under 40x lens). Heat mediated antigen retrieval with Tris-EDTA buffer (pH 9.0).