

For Research Use Only

# gamma tubulin Polyclonal ANTIBODY

Catalog Number: 26195-1-AP



## Basic Information

Catalog Number:  
26195-1-AP

Size:  
43 µg/150 µl

Source:  
Rabbit

Isotype:  
IgG

Purification Method:  
Antigen affinity purification

Immunogen Catalog Number:  
AG23575

GenBank Accession Number:  
BC000619

GeneID (NCBI):  
7283

Full Name:  
tubulin, gamma 1

Calculated MW:  
51 kDa

Observed MW:  
50-55 kDa

Recommended Dilutions:  
WB 1:500-1:1000  
IF 1:50-1:500

## Applications

Tested Applications:  
IF, WB, ELISA

Species Specificity:  
human, dog, mouse

**Note: suggested antigen retrieval with TE buffer pH 9.0; (\*) Alternatively, antigen retrieval may be performed with citrate buffer pH 6.0**

Positive Controls:

WB : mouse brain tissue, HeLa cells

IF : MDCK cells;

## Background Information

Gamma tubulin is a member of tubulin superfamily and is a key component required for microtubule nucleation and stabilization. It is concentrated at the pericentriolar material of centrosomes in interphase cells, predominantly on spindle poles in mitotic cells, while found in midbodies during cytokinesis. Overexpression of gamma tubulin has been found in various cancers including breast cancer and gliomas. This antibody can well label the centrosome structure.

## Notable Publications

Author	Pubmed ID	Journal	Application
--------	-----------	---------	-------------

## Storage

Storage:

Store at -20°C. Stable for one year after shipment.

Storage Buffer:

PBS with 0.1% sodium azide and 50% glycerol pH 7.3.

Aliquoting is unnecessary for -20°C storage

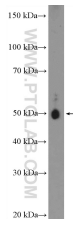
For technical support and original validation data for this product please contact:

T: 1 (888) 4PTGLAB (1-888-478-4522) (toll free in USA), or 1(312) 455-8498 (outside USA)

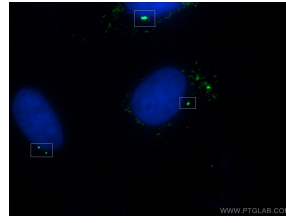
E: [proteintech@ptglab.com](mailto:proteintech@ptglab.com)  
W: [ptglab.com](http://ptglab.com)

This product is exclusively available under Proteintech Group brand and is not available to purchase from any other manufacturer.

## Selected Validation Data



mouse brain tissue were subjected to SDS PAGE followed by western blot with 26195-1-AP( gamma tubulin antibody at dilution of 1:600 incubated at room temperature for 1.5 hours



Immunofluorescent analysis of (-20l Ethanol ) fixed MDCK cells using 26195-1-AP(gamma tubulin antibody) at dilution of 1:50 and Alexa Fluor 488-conjugated AffiniPure Goat Anti-Rabbit IgG(H+L)