

For Research Use Only

CLEC16A Polyclonal ANTIBODY

Catalog Number: 26257-1-AP



Basic Information

Catalog Number: 26257-1-AP	GenBank Accession Number: BC112897	Recommended Dilutions: WB 1:500-1:1000 IHC 1:50-1:500
Size: 52 µg/150 µl	GeneID (NCBI): 23274	
Source: Rabbit	Full Name: C-type lectin domain family 16, member A	
Isotype: IgG	Calculated MW: 1053aa, 118 kDa	
Purification Method: Antigen affinity purification	Observed MW: 104-110 kDa	
Immunogen Catalog Number: AC24268		

Applications

Tested Applications: IHC, WB, ELISA	Positive Controls: WB : mouse spleen tissue; IHC : human tonsillitis tissue;
Species Specificity: human, mouse	
Note: suggested antigen retrieval with TE buffer pH 9.0; (*) Alternatively, antigen retrieval may be performed with citrate buffer pH 6.0	

Background Information

Notable Publications

Author	Pubmed ID	Journal	Application
--------	-----------	---------	-------------

Storage

Storage:
Store at -20°C. Stable for one year after shipment.
Storage Buffer:
PBS with 0.1% sodium azide and 50% glycerol pH 7.3.
Aliquoting is unnecessary for -20°C storage

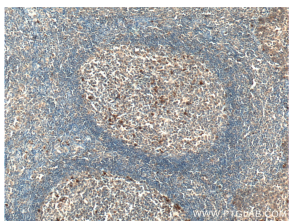
For technical support and original validation data for this product please contact:

T: 1 (888) 4PTGLAB (1-888-478-4522) (toll free in USA), or 1(312) 455-8498 (outside USA)

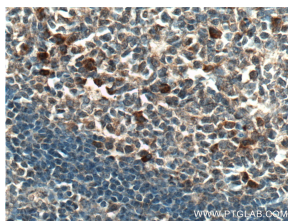
E: proteintech@ptglab.com
W: ptglab.com

This product is exclusively available under Proteintech Group brand and is not available to purchase from any other manufacturer.

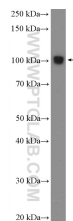
Selected Validation Data



Immunohistochemistry of paraffin-embedded human tonsillitis tissue slide using 26257-1-AP (CLEC16A antibody) at dilution of 1:200 (under 10x lens) heat mediated antigen retrieved with Tris-EDTA buffer(pH9).



Immunohistochemistry of paraffin-embedded human tonsillitis tissue slide using 26257-1-AP (CLEC16A antibody) at dilution of 1:200 (under 40x lens) heat mediated antigen retrieved with Tris-EDTA buffer(pH9).



mouse spleen tissue were subjected to SDS PAGE followed by western blot with 26257-1-AP (CLEC16A Antibody) at dilution of 1:600 incubated at room temperature for 1.5 hours