

For Research Use Only

GLE1 Polyclonal antibody

Catalog Number: 26466-1-AP



Basic Information

Catalog Number:

26466-1-AP

Size:

150ul, Concentration: 400 µg/ml by Bradford method using BSA as the standard;

Source:

Rabbit

Isotype:

IgG

Immunogen Catalog Number:

AG24208

GenBank Accession Number:

BC030012

GeneID (NCBI):

2733

Full Name:

GLE1 RNA export mediator homolog (yeast)

Calculated MW:

80 kDa

Observed MW:

79-80 kDa

Purification Method:

Antigen affinity purification

Recommended Dilutions:

WB 1:500-1:2000

IF 1:50-1:500

Applications

Tested Applications:

IF, WB, ELISA

Species Specificity:

human

Positive Controls:

WB: HeLa cells, MCF-7 cells, A549 cells, HepG2 cells, Jurkat cells, PC-3 cells

IF: HepG2 cells,

Background Information

Storage

Storage:

Store at -20°C. Stable for one year after shipment.

Storage Buffer:

PBS with 0.02% sodium azide and 50% glycerol pH 7.3.

Aliquoting is unnecessary for -20°C storage

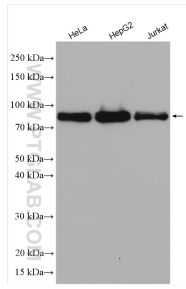
For technical support and original validation data for this product please contact:

T: 1 (888) 4PTGLAB (1-888-478-4522) (toll free in USA), or 1(312) 455-8498 (outside USA)

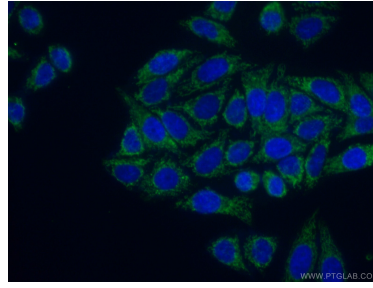
E: proteintech@ptglab.com
W: ptglab.com

This product is exclusively available under Proteintech Group brand and is not available to purchase from any other manufacturer.

Selected Validation Data



Various lysates were subjected to SDS PAGE followed by western blot with 26466-1-AP (GLE1 antibody) at dilution of 1:1000 incubated at room temperature for 1.5 hours.



Immunofluorescent analysis of (4% PFA) fixed HepG2 cells using 26466-1-AP (GLE1 antibody) at dilution of 1:50 and Alexa Fluor 488-conjugated AffiniPure Goat Anti-Rabbit IgG(H+L).