

For Research Use Only

LCE2B Polyclonal antibody

Catalog Number: 26512-1-AP



Basic Information

Catalog Number: 26512-1-AP	GenBank Accession Number: BC117235	Purification Method: Antigen affinity purification
Size: 150ul , Concentration: 300 µg/ml by Nanodrop and 213 µg/ml by Bradford method using BSA as the standard;	GeneID (NCBI): 26239	Recommended Dilutions: IHC 1:50-1:500
Source: Rabbit	Full Name: late cornified envelope 2B	
Isotype: IgG	Calculated MW: 110 aa, 11 kDa	
Immunogen Catalog Number: AG20213		

Applications

Tested Applications: IHC, ELISA	Positive Controls: IHC : human skin tissue,
Species Specificity: human	
Note-IHC: suggested antigen retrieval with TE buffer pH 9.0; (*) Alternatively, antigen retrieval may be performed with citrate buffer pH 6.0	

Background Information

This protein is skin-specific.

Storage

Storage:
Store at -20°C. Stable for one year after shipment.
Storage Buffer:
PBS with 0.02% sodium azide and 50% glycerol pH 7.3.
Aliquoting is unnecessary for -20°C storage

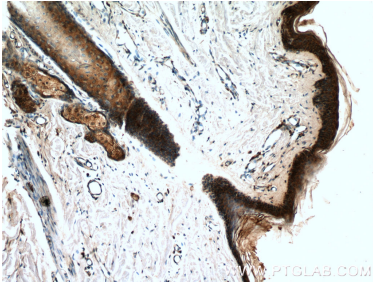
For technical support and original validation data for this product please contact:

T: 1 (888) 4PTGLAB (1-888-478-4522) (toll free in USA), or 1(312) 455-8498 (outside USA)

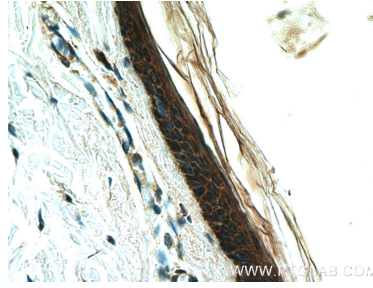
E: proteintech@ptglab.com
W: ptglab.com

This product is exclusively available under Proteintech Group brand and is not available to purchase from any other manufacturer.

Selected Validation Data



Immunohistochemical analysis of paraffin-embedded human skin tissue slide using 26512-1-AP (LCE2B Antibody) at dilution of 1:200 (under 10x lens).



Immunohistochemical analysis of paraffin-embedded human skin tissue slide using 26512-1-AP (LCE2B Antibody) at dilution of 1:200 (under 40x lens).