

For Research Use Only

# NUCB2/nesfatin-1 Polyclonal antibody

Catalog Number: 26712-1-AP

3 Publications



## Basic Information

Catalog Number:

26712-1-AP

Size:

150ul, Concentration: 700 ug/ml by Nanodrop and 413 ug/ml by Bradford method using BSA as the standard;

Source:

Rabbit

Isotype:

IgG

Immunogen Catalog Number:

AG25152

GenBank Accession Number:

NM\_005013

GeneID (NCBI):

4925

Full Name:

nucleobindin 2

Calculated MW:

50 kDa

Observed MW:

40-50 kDa

Purification Method:

Antigen affinity purification

Recommended Dilutions:

WB: 1:1000-1:4000

IHC: 1:500-1:2000

IF/ICC: 1:50-1:500

FC (Intra): 0.40 ug per 10<sup>6</sup> cells in a 100 µl suspension

## Applications

Tested Applications:

WB, IHC, IF/ICC, FC (Intra), ELISA

Cited Applications:

WB, IF

Species Specificity:

human, mouse, rat

Cited Species:

human, mouse, rat

**Note-IHC: suggested antigen retrieval with TE buffer pH 9.0; (\*) Alternatively, antigen retrieval may be performed with citrate buffer pH 6.0**

Positive Controls:

WB: mouse brain tissue, HEK-293T cells, HepG2 cells, human milk, mouse spleen tissue, mouse testis tissue, rat brain tissue

IHC: human colon cancer tissue, human intrahepatic cholangiocarcinoma tissue

IF/ICC: HepG2 cells,

FC (Intra): HepG2 cells,

## Background Information

NucB2, an anorexigenic molecule, is expressed mainly in the hypothalamus, particularly in the supraoptic nucleus (SON) and the paraventricular nucleus (PVN). NucB2 is also expressed in the subfornical organ (SFO). Because the SON and PVN are involved in body fluid regulation, NucB2 may be involved in dehydration-induced anorexia. NUCB2 is composed of a signal peptide of 24 amino acids in the N-terminal region and a protein structure containing 396 amino acids. Nesfatin-1 is an 82-amino-acid peptide hormone cleaved from nucleobindin2 (NUCB2).

## Notable Publications

Author	Pubmed ID	Journal	Application
Wang Li	29901268	Proteomics	WB
Xue-Xue Zhu	39394127	Cell Commun Signal	WB,IF
Siyi Ning	37277807	J Transl Med	WB

## Storage

Storage:

Store at -20°C. Stable for one year after shipment.

Storage Buffer:

PBS with 0.02% sodium azide and 50% glycerol, pH7.3

Aliquoting is unnecessary for -20°C storage

\*\*\* 20ul sizes contain 0.1% BSA

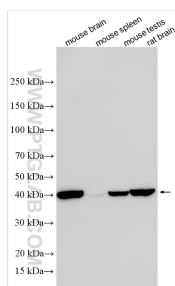
For technical support and original validation data for this product please contact:

T: 1 (888) 4PTGLAB (1-888-478-4522) (toll free in USA), or 1(312) 455-8498 (outside USA)

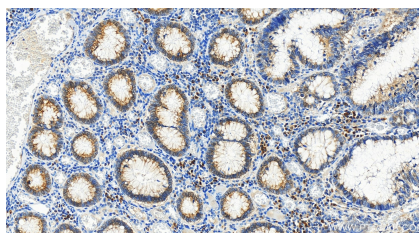
E: [proteintech@ptglab.com](mailto:proteintech@ptglab.com)  
W: [ptglab.com](http://ptglab.com)

This product is exclusively available under Proteintech Group brand and is not available to purchase from any other manufacturer.

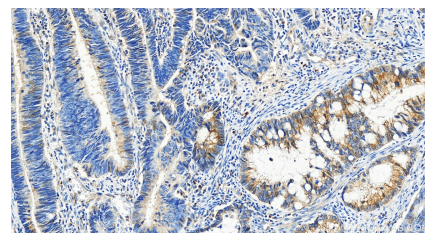
## Selected Validation Data



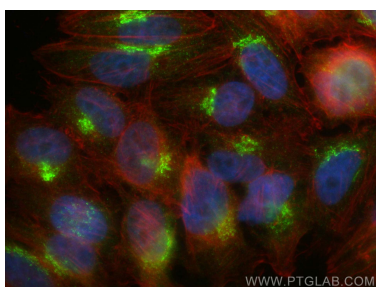
Various lysates were subjected to SDS PAGE followed by western blot with 26712-1-AP (NUCB2/nesfatin-1 antibody) at dilution of 1:2000 incubated at room temperature for 1.5 hours.



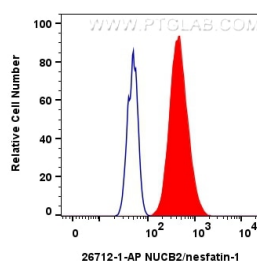
Immunohistochemical analysis of paraffin-embedded human colon cancer tissue slide using 26712-1-AP (NUCB2/nesfatin-1 antibody) at dilution of 1:1000 (under 20x lens). Heat mediated antigen retrieval with Tris-EDTA buffer (pH 9.0).



Immunohistochemical analysis of paraffin-embedded human colon cancer tissue slide using 26712-1-AP (NUCB2/nesfatin-1 antibody) at dilution of 1:1000 (under 20x lens). Heat mediated antigen retrieval with Tris-EDTA buffer (pH 9.0).



Immunofluorescent analysis of (4% PFA) fixed HepG2 cells using NUCB2/nesfatin-1 antibody (26712-1-AP) at dilution of 1:200 and CoraLite®488-Conjugated AffiniPure Goat Anti-Rabbit IgG(H+L) (SA00013-2), CL594-phalloidin (red).



1x10<sup>6</sup> HepG2 cells were intracellularly stained with 0.4 ug NUCB2/nesfatin-1 Polyclonal antibody (26712-1-AP)(red), or 0.4 ug Rabbit IgG control Rabbit PolyAb (30000-O-AP) (blue). Cells were fixed with 4% PFA and permeabilized with Flow Cytometry Perm Buffer (PF00011-C).