

For Research Use Only

FAM176A Polyclonal ANTIBODY



Catalog Number: 26726-1-AP

Featured Product

1 Publications

Basic Information

Catalog Number:

26726-1-AP

Size:

150UL, Concentration: 700 µg/ml by Bradford method using BSA as the standard;

Source:

Rabbit

Isotype:

IgG

Immunogen Catalog Number:

AG24990

GenBank Accession Number:

BC063016

GeneID (NCBI):

84141

Full Name:

family with sequence similarity 176, member A

Calculated MW:

17 kDa

Purification Method:

Antigen affinity purification

Recommended Dilutions:

IHC 1:50-1:500

Applications

Tested Applications:

IHC, ELISA

Cited Applications:

WB

Species Specificity:

human, mouse

Cited Species:

mouse

Note-IHC: suggested antigen retrieval with TE buffer pH 9.0; (*) Alternatively, antigen retrieval may be performed with citrate buffer pH 6.0

Positive Controls:

IHC : human pancreas tissue,

Background Information

Notable Publications

Author	Pubmed ID	Journal	Application
Jingxuan Li	31977009	Cardiovasc Res	WB

Storage

Storage:

Store at -20°C. Stable for one year after shipment.

Storage Buffer:

PBS with 0.1% sodium azide and 50% glycerol pH 7.3.

Aliquoting is unnecessary for -20°C storage

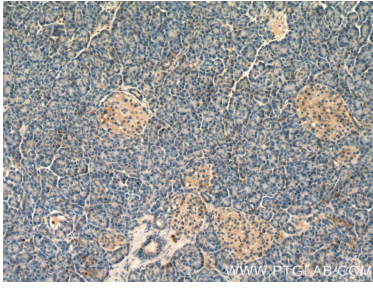
For technical support and original validation data for this product please contact:

T: 1 (888) 4PTGLAB (1-888-478-4522) (toll free in USA), or 1(312) 455-8498 (outside USA)

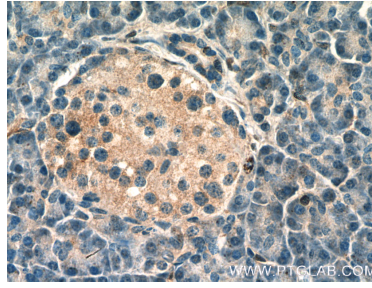
E: proteintech@ptglab.com
W: ptglab.com

This product is exclusively available under Proteintech Group brand and is not available to purchase from any other manufacturer.

Selected Validation Data



Immunohistochemical analysis of paraffin-embedded human pancreas tissue slide using 26726-1-AP (FAM176A Antibody) at dilution of 1:200 (under 10x lens).



Immunohistochemical analysis of paraffin-embedded human pancreas tissue slide using 26726-1-AP (FAM176A Antibody) at dilution of 1:200 (under 40x lens).