

For Research Use Only

CENPA Polyclonal ANTIBODY



Catalog Number: 26754-1-AP

Basic Information

Catalog Number:

26754-1-AP

Size:

150UL, Concentration: 367 µg/ml by Bradford method using BSA as the standard;

Source:

Rabbit

Isotype:

IgG

Immunogen Catalog Number:

AG25025

GenBank Accession Number:

BC002703

GeneID (NCBI):

1058

Full Name:

centromere protein A

Calculated MW:

16 kDa

Observed MW:

16 kDa

Purification Method:

Antigen affinity purification

Recommended Dilutions:

WB 1:500-1:1000

Applications

Tested Applications:

WB, ELISA

Species Specificity:

human

Positive Controls:

WB: MCF-7 cells, Jurkat cells

Background Information

Centromere protein-A (CENP-A) is a Histone H3-like protein that contains a C-terminal H3-like domain, required for centromere localization of CENP-A, and an antigenic N-terminal domain. CENP-A, originally isolated from HeLa cells, is essential for kinetochore targeting of CENP-C. In the presence of DNA, CENP-A forms an octameric complex with histones H4, H2A and H2B. CENP-A specifically localizes to active centromeres and is a component of specialized centromeric nucleosomes, on which kinetochores are assembled. CENP-A is essential for nucleosomal packaging of centromeric DNA at interphase and functions as a centromere formation marker on the chromosome.

Storage

Storage:

Store at -20°C. Stable for one year after shipment.

Storage Buffer:

PBS with 0.1% sodium azide and 50% glycerol pH 7.3.

Aliquoting is unnecessary for -20°C storage

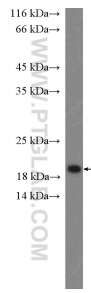
For technical support and original validation data for this product please contact:

T: 1 (888) 4PTGLAB (1-888-478-4522) (toll free in USA), or 1(312) 455-8498 (outside USA)

E: proteintech@ptglab.com
W: ptglab.com

This product is exclusively available under Proteintech Group brand and is not available to purchase from any other manufacturer.

Selected Validation Data



MCF-7 cells were subjected to SDS PAGE followed by western blot with 26754-1-AP (CENPA Antibody) at dilution of 1:600 incubated at room temperature for 1.5 hours.