

For Research Use Only

mCherry Polyclonal antibody

Catalog Number: 26765-1-AP **162 Publications**



Basic Information

Catalog Number:

26765-1-AP

Size:

150ul , Concentration: 820 ug/ml by Nanodrop;

Source:

Rabbit

Isotype:

IgG

Immunogen Catalog Number:

AG25320

GenBank Accession Number:

GeneID (NCBI):

Full Name:

Calculated MW:

27 kDa

Purification Method:

Antigen affinity purification

Recommended Dilutions:

WB: 1:1000-1:4000

IP: 0.5-4.0 ug for 1.0-3.0 mg of total protein lysate

IF/ICC: 1:400-1:1600

FC (Intra): 0.25 ug per 10⁶ cells in a 100 µl suspension

Applications

Tested Applications:

WB, IF/ICC, FC (Intra), IP, ELISA

Cited Applications:

WB, IHC, IF, IP, CoIP

Species Specificity:

recombinant protein

Cited Species:

human, mouse, rabbit, monkey, zebrafish, yeast, plant, c.elegans, d. punctatus

Positive Controls:

WB : Transfected HEK-293 cells, Recombinant protein

IP : Transfected HEK-293T cells,

IF/ICC : Transfected HEK-293 cells,

FC (Intra) : Transfected HEK-293T cells,

Background Information

Red fluorescent proteins (RFPs) is a collective term referring to a heterogeneous group of red chromophore-carrying proteins, originating from various species and forming different protein lineages. The original RFP (dsRed) is a 225 amino acid fluorescent protein (25.9 kDa) derived from *Discosoma* sp.. It emits red light with a peak wavelength of 593 nm upon excitation by green light (excitation peak at 558 nm). When fused with other proteins, RFP serves as a versatile reporter protein e.g. for quantifying expression levels or facilitates visualization of subcellular localization through fluorescence microscopy. This antibody is a rabbit polyclonal antibody raised against mCherry. It can be used to detect mCherry, dsRed, tdTomato, and mScarlet.

Notable Publications

| Author | Pubmed ID | Journal | Application |
|---------------|-----------|---------------|-------------|
| Rong Zhou | 36117989 | iScience | IF |
| Xiaodong Wang | 34890460 | Plant Physiol | IF,CoIP |
| Xiaoqiang Zhu | 36314411 | Adv Mater | WB |

Storage

Storage:

Store at -20°C. Stable for one year after shipment.

Storage Buffer:

PBS with 0.02% sodium azide and 50% glycerol, pH7.3

Aliquoting is unnecessary for -20°C storage

***** 20ul sizes contain 0.1%BSA**

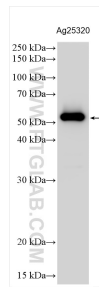
For technical support and original validation data for this product please contact:

T: 1 (888) 4PTGLAB (1-888-478-4522) (toll free in USA), or 1(312) 455-8498 (outside USA)

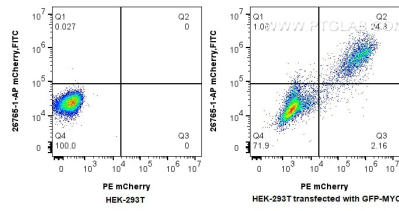
E: proteintech@ptglab.com
W: ptglab.com

This product is exclusively available under Proteintech Group brand and is not available to purchase from any other manufacturer.

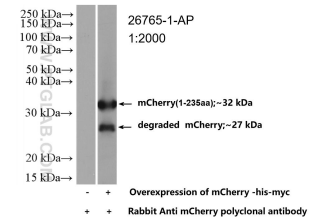
Selected Validation Data



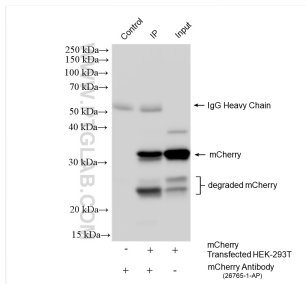
mCherry tagged protein was subjected to SDS PAGE followed by western blot with 26765-1-AP (mCherry antibody) at dilution of 1:8000 incubated at room temperature for 1.5 hours.



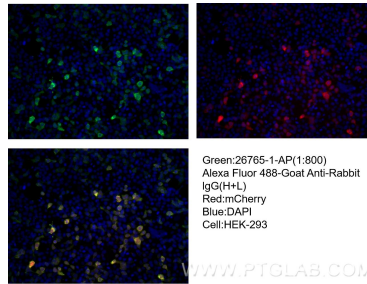
1×10^6 Transfected HEK-293T cells were intracellularly stained with 0.25 μ g mCherry Polyclonal antibody (26765-1-AP) and CoraLite® 488-Conjugated Goat Anti-Rabbit IgG(H+L) (SA00013-2), and 0.25 μ g Isotype Control. Cells were fixed and permeabilized with Intracellular Flow Cytometry Fixation & Permeabilization Buffer Kit (PF00019).



WB result of mCherry antibody (26765-1-AP; 1:2000; room temperature for 1.5 hours) with negative control and mCherry overexpressed Transfected HEK-293 cells.



IP result of anti-mCherry (IP:26765-1-AP, 4 μ g; Detection:26765-1-AP 1:2000) with Transfected HEK-293T cells lysate 1280 μ g.



Immunofluorescent analysis of (-20°C Ethanol) fixed Transfected HEK-293 cells using mCherry antibody (26765-1-AP) at dilution of 1:800 and CoraLite® 488-Conjugated AffiniPure Goat Anti-Rabbit IgG(H+L).

www.ptglab.com