

For Research Use Only

SLC22A7 Polyclonal antibody

Catalog Number: 26796-1-AP **2 Publications**



Basic Information

Catalog Number:

26796-1-AP

Size:

150ul , Concentration: 367 µg/ml by Bradford method using BSA as the standard;

Source:

Rabbit

Isotype:

IgG

Immunogen Catalog Number:

AG25217

GenBank Accession Number:

BC033805

GeneID (NCBI):

10864

Full Name:

solute carrier family 22 (organic anion transporter), member 7

Calculated MW:

60 kDa

Observed MW:

65-70 kDa

Purification Method:

Antigen affinity purification

Recommended Dilutions:

WB 1:500-1:1000

IP 0.5-4.0 ug for IP and 1:500-1:2000 for WB

IHC 1:50-1:500

Applications

Tested Applications:

IHC, IP, WB, ELISA

Cited Applications:

WB

Species Specificity:

human, mouse, rat

Cited Species:

human, mouse

Note-IHC: suggested antigen retrieval with TE buffer pH 9.0; (*) Alternatively, antigen retrieval may be performed with citrate buffer pH 6.0

Positive Controls:

WB : mouse kidney tissue, HEK-293 cells, rat liver tissue

IP : mouse liver tissue,

IHC : mouse kidney tissue, mouse liver tissue

Background Information

Notable Publications

Author	Pubmed ID	Journal	Application
Karolin Weitkunat	34064336	Nutrients	WB
Yingying Wang	33838133	Biochem Pharmacol	WB

Storage

Storage:

Store at -20°C. Stable for one year after shipment.

Storage Buffer:

PBS with 0.02% sodium azide and 50% glycerol pH 7.3.

Aliquoting is unnecessary for -20°C storage

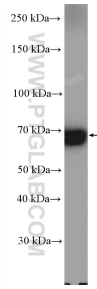
For technical support and original validation data for this product please contact:

T: 1 (888) 4PTGLAB (1-888-478-4522) (toll free in USA), or 1(312) 455-8498 (outside USA)

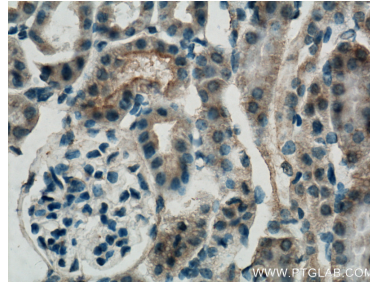
E: proteintech@ptglab.com
W: ptglab.com

This product is exclusively available under Proteintech Group brand and is not available to purchase from any other manufacturer.

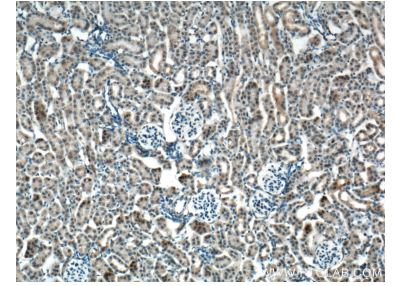
Selected Validation Data



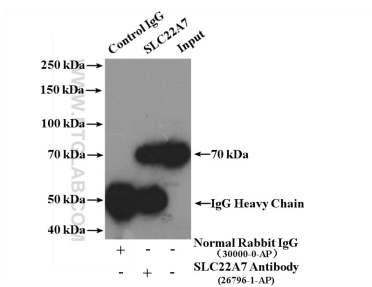
mouse kidney tissue were subjected to SDS PAGE followed by western blot with 26796-1-AP (SLC22A7 Antibody) at dilution of 1:600 incubated at room temperature for 1.5 hours.



Immunohistochemical analysis of paraffin-embedded mouse kidney tissue slide using 26796-1-AP (SLC22A7 Antibody) at dilution of 1:200 (under 40x lens). Heat mediated antigen retrieval with Tris-EDTA buffer (pH 9.0).



Immunohistochemical analysis of paraffin-embedded mouse kidney tissue slide using 26796-1-AP (SLC22A7 Antibody) at dilution of 1:200 (under 10x lens). Heat mediated antigen retrieval with Tris-EDTA buffer (pH 9.0).



IP Result of anti-SLC22A7 (IP:26796-1-AP, 4ug; Detection:26796-1-AP 1:1000) with mouse liver tissue lysate 5200ug.