

For Research Use Only

GPSM2 Polyclonal antibody

Catalog Number: 26798-1-AP

1 Publications



Basic Information

Catalog Number: 26798-1-AP	GenBank Accession Number: BC027732	Purification Method: Antigen affinity purification
Size: 150ul , Concentration: 260 ug/ml by Nanodrop and 200 ug/ml by Bradford method using BSA as the standard;	GeneID (NCBI): 29899	Recommended Dilutions: WB: 1:1000-1:4000
Source: Rabbit	UNIPROT ID: P81274	IHC: 1:50-1:500
Isotype: IgG	Full Name: G-protein signaling modulator 2 (AGS3-like, C. elegans)	IF/ICC: 1:50-1:500
Immunogen Catalog Number: AG25195	Calculated MW: 75 kDa	
	Observed MW: 70-77 kDa	

Applications

Tested Applications: WB, IHC, IF/ICC, ELISA	Positive Controls:
Cited Applications: IHC	WB : HeLa cells, mouse heart tissue, HEK-293T cells, mouse liver tissue, HEK-293 cells
Species Specificity: human, mouse, rat	IHC : human placenta tissue, human liver tissue
Cited Species: human	IF/ICC : MCF-7 cells,

Note-IHC: suggested antigen retrieval with TE buffer pH 9.0; (*) Alternatively, antigen retrieval may be performed with citrate buffer pH 6.0

Background Information

GPSM2 belongs to a family of proteins that modulate activation of G proteins. GPSM2 assists in the exchange of guanine nucleotides, and allows extracellular signals to be transmitted to cells via cell surface, and ultimately plays a key role in the activation of G-proteins. Therefore, GPSM2 is a critical factor for the stability of cell division. Some recent studies have shown that GPSM2 messenger RNA (mRNA) is overexpressed and plays a positive role in the development of certain tumors, such as liver cancer, pancreatic cancer, breast cancer. It also plays a role in neuroblast division and in the development of normal hearing. Mutations in GPSM2 are associated with autosomal recessive nonsyndromic deafness (DFNB82), which is a form of non-syndromic deafness characterized by prelingual, bilateral, severe, sensorineural hearing loss.

Notable Publications

Author	Pubmed ID	Journal	Application
Xue Song	40031966	Nan Fang Yi Ke Da Xue Xue Bao	IHC

Storage

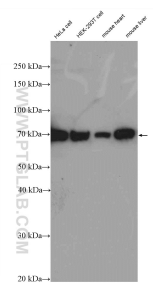
Storage:
Store at -20°C. Stable for one year after shipment.
Storage Buffer:
PBS with 0.02% sodium azide and 50% glycerol, pH7.3
Aliquoting is unnecessary for -20°C storage

*** 20ul sizes contain 0.1% BSA

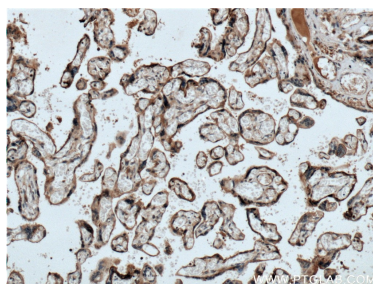
For technical support and original validation data for this product please contact:
T: 1 (888) 4PTGLAB (1-888-478-4522) (toll free in USA), or 1(312) 455-8498 (outside USA)
E: proteintech@ptglab.com
W: ptglab.com

This product is exclusively available under Proteintech Group brand and is not available to purchase from any other manufacturer.

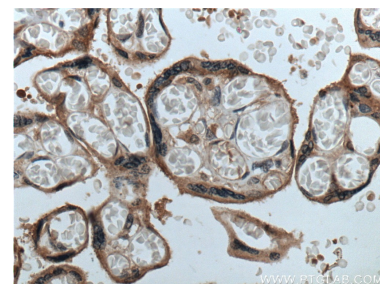
Selected Validation Data



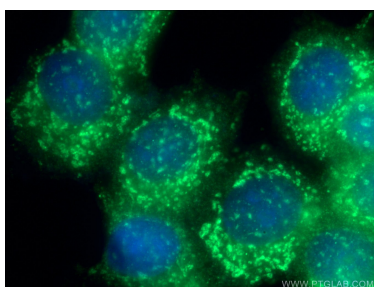
Various lysates were subjected to SDS PAGE followed by western blot with 26798-1-AP (GPSM2 antibody) at dilution of 1:2000 incubated at room temperature for 1.5 hours.



Immunohistochemical analysis of paraffin-embedded human placenta tissue slide using 26798-1-AP (GPSM2 antibody) at dilution of 1:200 (under 10x lens. Heat mediated antigen retrieval with Tris-EDTA buffer (pH 9.0).



Immunohistochemical analysis of paraffin-embedded human placenta tissue slide using 26798-1-AP (GPSM2 antibody) at dilution of 1:200 (under 40x lens. Heat mediated antigen retrieval with Tris-EDTA buffer (pH 9.0).



Immunofluorescent analysis of (-20°C Ethanol) fixed MCF-7 cells using 26798-1-AP (GPSM2 antibody) at dilution of 1:50 and Alexa Fluor 488-conjugated Goat Anti-Rabbit IgG(H+L).