

For Research Use Only

CLCN5 Polyclonal ANTIBODY

Catalog Number: 26812-1-AP



Basic Information

Catalog Number:

26812-1-AP

Size:

150UL, Concentration: 400 µg/ml by Bradford method using BSA as the standard;

Source:

Rabbit

Isotype:

IgG

Immunogen Catalog Number:

AG25182

GenBank Accession Number:

BC130429

GeneID (NCBI):

1184

Full Name:

chloride channel 5

Calculated MW:

83 kDa

Observed MW:

80-90 kDa

Purification Method:

Protein A purification

Recommended Dilutions:

WB 1:500-1:1000

IHC 1:50-1:500

Applications

Tested Applications:

IHC, WB, ELISA

Species Specificity:

human, dog, mouse

Note-IHC: suggested antigen retrieval with TE buffer pH 9.0; (*) Alternatively, antigen retrieval may be performed with citrate buffer pH 6.0

Positive Controls:

WB: MDCK cells, mouse brain tissue

IHC: human kidney tissue,

Background Information

Storage

Storage:

Store at -20°C. Stable for one year after shipment.

Storage Buffer:

PBS with 0.1% sodium azide and 50% glycerol pH 7.3.

Aliquoting is unnecessary for -20°C storage

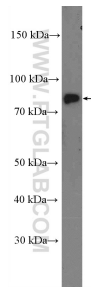
For technical support and original validation data for this product please contact:

T: 1 (888) 4PTGLAB (1-888-478-4522) (toll free in USA), or 1(312) 455-8498 (outside USA)

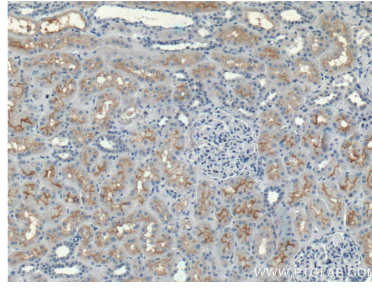
E: proteintech@ptglab.com
W: ptglab.com

This product is exclusively available under Proteintech Group brand and is not available to purchase from any other manufacturer.

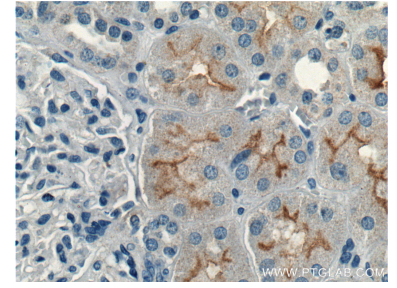
Selected Validation Data



MDCK cells were subjected to SDS PAGE followed by western blot with 26812-1-AP (CLCN5 Antibody) at dilution of 1:600 incubated at room temperature for 1.5 hours.



Immunohistochemical analysis of paraffin-embedded human kidney tissue slide using 26812-1-AP (CLCN5 Antibody) at dilution of 1:200 (under 10x lens).



Immunohistochemical analysis of paraffin-embedded human kidney tissue slide using 26812-1-AP (CLCN5 Antibody) at dilution of 1:200 (under 40x lens).