

For Research Use Only

# CstF-64 Polyclonal antibody

Catalog Number: 26825-1-AP



## Basic Information

**Catalog Number:**

26825-1-AP

**Size:**

150ul, Concentration: 700 µg/ml by Nanodrop and 433 µg/ml by Bradford method using BSA as the standard;

**Source:**

Rabbit

**Isotype:**

IgG

**Immunogen Catalog Number:**

AG25254

**GenBank Accession Number:**

BC017712

**GeneID (NCBI):**

1478

**Full Name:**

cleavage stimulation factor, 3' pre-RNA, subunit 2, 64kDa

**Calculated MW:**

61 kDa

**Observed MW:**

64 kDa

**Purification Method:**

Antigen affinity purification

**Recommended Dilutions:**

WB 1:500-1:1000

IP 0.5-4.0 ug for IP and 1:200-1:1000 for WB

IHC 1:50-1:500

IF 1:50-1:500

## Applications

**Tested Applications:**

IF, IHC, IP, WB, ELISA

**Species Specificity:**

human, mouse, rat

**Note-IHC: suggested antigen retrieval with TE buffer pH 9.0; (\*) Alternatively, antigen retrieval may be performed with citrate buffer pH 6.0**

**Positive Controls:**

WB : COLO 320 cells, HeLa cells, mouse brain tissue, mouse testis tissue

IP : HeLa cells,

IHC : human breast cancer tissue,

IF : HepG2 cells,

## Background Information

Cleavage stimulation factor 64 kDa subunit is a protein that in humans is encoded by the CSTF2 gene. This gene encodes a nuclear protein with an RRM (RNA recognition motif) domain. The protein is a member of the cleavage stimulation factor (CSTF) complex that is involved in the 3' end cleavage and polyadenylation of pre-mRNAs. Specifically, this protein binds GU-rich elements within the 3'-untranslated region of mRNAs.

## Storage

**Storage:**

Store at -20°C. Stable for one year after shipment.

**Storage Buffer:**

PBS with 0.02% sodium azide and 50% glycerol pH 7.3.

Aliquoting is unnecessary for -20°C storage

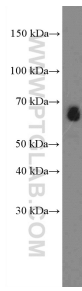
For technical support and original validation data for this product please contact:

T: 1 (888) 4PTGLAB (1-888-478-4522) (toll free in USA), or 1(312) 455-8498 (outside USA)

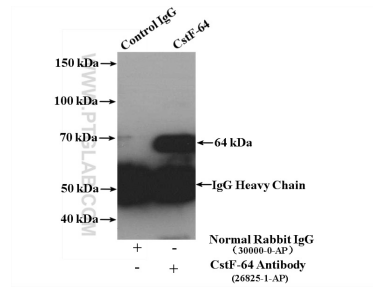
E: proteintech@ptglab.com  
W: ptglab.com

**This product is exclusively available under Proteintech Group brand and is not available to purchase from any other manufacturer.**

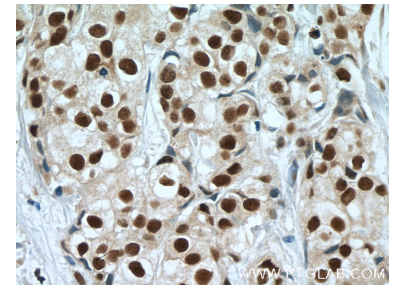
## Selected Validation Data



COLO 320 cells were subjected to SDS PAGE followed by western blot with 26825-1-AP (CstF-64 Antibody) at dilution of 1:600 incubated at room temperature for 1.5 hours.



IP Result of anti-CstF-64 (IP:26825-1-AP, 4ug; Detection:26825-1-AP 1:300) with HeLa cells lysate 2900ug.



Immunohistochemical analysis of paraffin-embedded human breast cancer tissue slide using 26825-1-AP (CstF-64 Antibody) at dilution of 1:200 (under 40x lens). Heat mediated antigen retrieval with Tris-EDTA buffer (pH 9.0).



Immunofluorescent analysis of (4% PFA) fixed HepG2 cells using 26825-1-AP (CstF-64 antibody) at dilution of 1:150 and Alexa Fluor 488-conjugated AffiniPure Goat Anti-Rabbit IgG(H+L).