

For Research Use Only

LTBP1 Polyclonal antibody

Catalog Number: 26855-1-AP

Featured Product

10 Publications



Basic Information

Catalog Number:

26855-1-AP

Size:

150ul, Concentration: 500 ug/ml by Nanodrop;

Source:

Rabbit

Isotype:

IgG

Immunogen Catalog Number:

AG25392

GenBank Accession Number:

BC130289

GeneID (NCBI):

4052

UNIPROT ID:

Q14766

Full Name:

latent transforming growth factor beta binding protein 1

Calculated MW:

1721 aa, 187 kDa

Observed MW:

150 kDa

Purification Method:

Antigen affinity purification

Recommended Dilutions:

WB: 1:500-1:3000

IHC: 1:50-1:500

IF/ICC: 1:50-1:500

Applications

Tested Applications:

WB, IHC, IF/ICC, ELISA

Cited Applications:

WB, IHC, IF

Species Specificity:

human

Cited Species:

human, mouse

Positive Controls:

WB: human plasma tissue,

IHC: human breast cancer tissue,

IF/ICC: HeLa cells,

Note-IHC: suggested antigen retrieval with TE buffer pH 9.0; (*) Alternatively, antigen retrieval may be performed with citrate buffer pH 6.0

Background Information

Latent Transforming Growth Factor Beta Binding Protein 1 (LTBP1) is a large extracellular matrix protein that belongs to the latent TGF-beta binding protein family. It plays a crucial role in the regulation of TGF-beta, a multifunctional cytokine involved in various cellular processes such as cell growth, differentiation, and immune response. LTBP1 is essential for TGF-beta folding, secretion, matrix localization, and activation. It forms latent complexes with TGF-beta by covalently binding the TGF-beta propeptide (LAP) via disulfide bonds in the endoplasmic reticulum. This complex is then secreted and targeted to the extracellular matrix, where TGF-beta can be activated by various mechanism.

Notable Publications

Author	Pubmed ID	Journal	Application
Mingqing Cui	34608122	Cell Death Discov	WB
Rui Cai	32216815	J Transl Med	WB, IHC
Tala O Khatib	39955775	Cell Rep	WB

Storage

Storage:

Store at -20°C. Stable for one year after shipment.

Storage Buffer:

PBS with 0.02% sodium azide and 50% glycerol, pH7.3

Aliquoting is unnecessary for -20°C storage

*** 20ul sizes contain 0.1% BSA

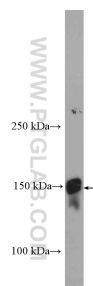
For technical support and original validation data for this product please contact:

T: 1 (888) 4PTGLAB (1-888-478-4522) (toll free in USA), or 1(312) 455-8498 (outside USA)

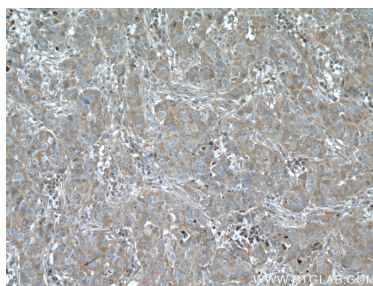
E: proteintech@ptglab.com
W: ptglab.com

This product is exclusively available under Proteintech Group brand and is not available to purchase from any other manufacturer.

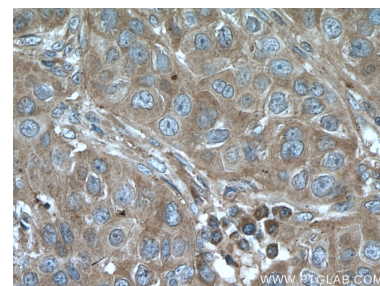
Selected Validation Data



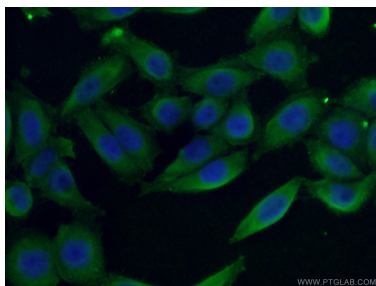
human plasma were subjected to SDS PAGE followed by western blot with 26855-1-AP (LTBP1 Antibody) at dilution of 1:1500 incubated at room temperature for 1.5 hours.



Immunohistochemical analysis of paraffin-embedded human breast cancer tissue slide using 26855-1-AP (LTBP1 antibody) at dilution of 1:200 (under 10x lens. Heat mediated antigen retrieval with Tris-EDTA buffer (pH 9.0).



Immunohistochemical analysis of paraffin-embedded human breast cancer tissue slide using 26855-1-AP (LTBP1 antibody) at dilution of 1:200 (under 40x lens. Heat mediated antigen retrieval with Tris-EDTA buffer (pH 9.0).



Immunofluorescent analysis of (4% PFA) fixed HeLa cells using 26855-1-AP (LTBP1 antibody) at dilution of 1:50 and Alexa Fluor 488-Conjugated AffiniPure Goat Anti-Rabbit IgG(H+L).