

For Research Use Only

# RAF1 Polyclonal antibody

Catalog Number: 26863-1-AP **2 Publications**



## Basic Information

<b>Catalog Number:</b> 26863-1-AP	<b>GenBank Accession Number:</b> BC018119	<b>Purification Method:</b> Antigen affinity purification
<b>Size:</b> 150ul , Concentration: 900 µg/ml by Nanodrop and 667 µg/ml by Bradford method using BSA as the standard;	<b>GeneID (NCBI):</b> 5894	<b>Recommended Dilutions:</b> WB 1:500-1:2000 IHC 1:50-1:500
<b>Source:</b> Rabbit	<b>Full Name:</b> v-raf-1 murine leukemia viral oncogene homolog 1	
<b>Isotype:</b> IgG	<b>Calculated MW:</b> 648 aa, 73 kDa	
<b>Immunogen Catalog Number:</b> AG25423	<b>Observed MW:</b> 70-75 kDa	

## Applications

<b>Tested Applications:</b> IHC, WB, ELISA	<b>Positive Controls:</b> WB : DU 145 cells, IHC : human prostate cancer tissue, human colon cancer tissue
<b>Cited Applications:</b> WB	
<b>Species Specificity:</b> human	
<b>Cited Species:</b> human	
<b>Note-IHC: suggested antigen retrieval with TE buffer pH 9.0; (*) Alternatively, antigen retrieval may be performed with citrate buffer pH 6.0</b>	

## Background Information

Raf-1 proto-oncogene, serine/threonine kinase (RAF1), is a MAP kinase kinase kinase (MAP3K), which functions downstream of the Ras family of membrane associated GTPases to which it binds directly. RAF1 has two isoforms with MW of 73, 75 kDa. RAF1 plays an important role in the control of gene expression involved in the cell division cycle, apoptosis, cell differentiation and cell migration.

## Notable Publications

Author	Pubmed ID	Journal	Application
Dali Zhao	3455268	FEBS Open Bio	WB
Feifei Zhang	34017080	Oncogene	WB

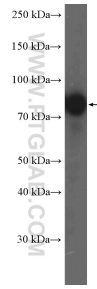
## Storage

**Storage:**  
Store at -20°C. Stable for one year after shipment.  
**Storage Buffer:**  
PBS with 0.02% sodium azide and 50% glycerol pH 7.3.  
Aliquoting is unnecessary for -20°C storage

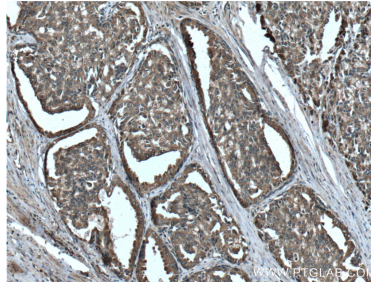
For technical support and original validation data for this product please contact:  
T: 1 (888) 4PTGLAB (1-888-478-4522) (toll free in USA), or 1(312) 455-8498 (outside USA)  
E: proteintech@ptglab.com  
W: ptglab.com

**This product is exclusively available under Proteintech Group brand and is not available to purchase from any other manufacturer.**

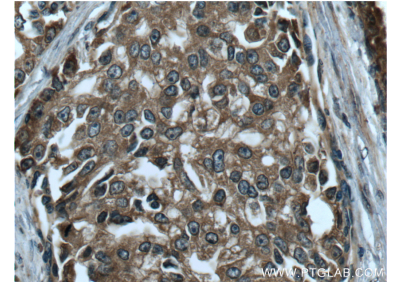
## Selected Validation Data



DU 145 cells were subjected to SDS PAGE followed by western blot with 26863-1-AP (RAF1 Antibody) at dilution of 1:1000 incubated at room temperature for 1.5 hours.



Immunohistochemical analysis of paraffin-embedded human prostate cancer tissue slide using 26863-1-AP (RAF1 Antibody) at dilution of 1:200 (under 10x lens). Heat mediated antigen retrieval with Tris-EDTA buffer (pH 9.0).



Immunohistochemical analysis of paraffin-embedded human prostate cancer tissue slide using 26863-1-AP (RAF1 Antibody) at dilution of 1:200 (under 40x lens). Heat mediated antigen retrieval with Tris-EDTA buffer (pH 9.0).