

For Research Use Only

# Collagen Type X Polyclonal antibody

Catalog Number: 26984-1-AP

20 Publications



## Basic Information

<b>Catalog Number:</b> 26984-1-AP	<b>GenBank Accession Number:</b> BC130621	<b>Purification Method:</b> Antigen affinity purification
<b>Size:</b> 150ul , Concentration: 1000 ug/ml by Nanodrop;	<b>GeneID (NCBI):</b> 1300	<b>Recommended Dilutions:</b> WB: 1:500-1:1000 IF/ICC: 1:200-1:800
<b>Source:</b> Rabbit	<b>UNIPROT ID:</b> Q03692	
<b>Isotype:</b> IgG	<b>Full Name:</b> collagen, type X, alpha 1	
<b>Immunogen Catalog Number:</b> AG25741	<b>Calculated MW:</b> 680 aa, 66 kDa	
	<b>Observed MW:</b> 60-66 kDa	

## Applications

<b>Tested Applications:</b> WB, IF/ICC, ELISA	<b>Positive Controls:</b> WB : BxPC-3 cells, ROS1728 cells, HCT 116 cells IF/ICC : HeLa cells,
<b>Cited Applications:</b> WB, IHC, IF	
<b>Species Specificity:</b> human, mouse, rat	
<b>Cited Species:</b> human, mouse, rat, rabbit	

## Background Information

Collagen type X alpha 1 (COL10A1), a secreted, short-chain collagen, belongs to the collagen family, which is a major interstitial matrix component specifically expressed by hypertrophic chondrocytes. COL10A1 expression is elevated in many solid tumor types, such as colon cancer, esophagus cancer, and breast cancer, and displays vital roles in many critical cellular processes (PMID: 30154451, 25321476).

## Notable Publications

Author	Pubmed ID	Journal	Application
Danmei Li	41172600	Biomaterials	IHC,IF
Jiawei Zhou	41796360	Stem Cell Res Ther	IF
Mingkuan Lu	41460352	Cell Mol Life Sci	IHC

## Storage

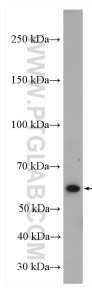
**Storage:**  
Store at -20°C. Stable for one year after shipment.  
**Storage Buffer:**  
PBS with 0.02% sodium azide and 50% glycerol, pH7.3  
Aliquoting is unnecessary for -20°C storage

\*\*\* 20ul sizes contain 0.1% BSA

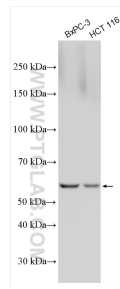
For technical support and original validation data for this product please contact:  
T: 1 (888) 4PTGLAB (1-888-478-4522) (toll free in USA), or 1(312) 455-8498 (outside USA)  
E: [proteintech@ptglab.com](mailto:proteintech@ptglab.com)  
W: [ptglab.com](http://ptglab.com)

This product is exclusively available under Proteintech Group brand and is not available to purchase from any other manufacturer.

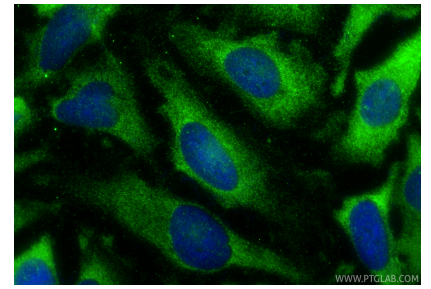
## Selected Validation Data



ROS1728 cells were subjected to SDS PAGE followed by western blot with 26984-1-AP (COL10A1 antibody) at dilution of 1:600 incubated at room temperature for 1.5 hours.



Various lysates were subjected to SDS PAGE followed by western blot with 26984-1-AP (COL10A1 antibody) at dilution of 1:500 incubated at room temperature for 1.5 hours.



Immunofluorescent analysis of (-20°C Methanol) fixed HeLa cells using Collagen Type X antibody (26984-1-AP) at dilution of 1:400 and CoraLite®488-Conjugated Goat Anti-Rabbit IgG(H+L) (SA00013-2).