

For Research Use Only

SCRIB Polyclonal antibody

Catalog Number: 27083-1-AP



Basic Information

Catalog Number: 27083-1-AP	GenBank Accession Number: BC036905	Purification Method: Antigen affinity purification
Size: 150ul , Concentration: 1000 µg/ml by Nanodrop and 500 µg/ml by Bradford method using BSA as the standard;	GeneID (NCBI): 23513	Recommended Dilutions: WB 1:2000-1:12000
Source: Rabbit	Full Name: scribbled homolog (Drosophila)	
Isotype: IgG	Calculated MW: 1630 aa, 175 kDa	
Immunogen Catalog Number: AG25795	Observed MW: 260 kDa	

Applications

Tested Applications: WB, ELISA	Positive Controls: WB : NIH/3T3 cells,
Species Specificity: human, mouse	

Background Information

SCRIB encodes a large, 260-kDa cytoplasmic scaffolding protein that comprises a large leucine-rich repeat (LRR) region and 4 PDZ domains that regulate protein-protein interactions. In mammals, cell polarity is established and maintained by at least 3 protein modules (Scrib, Crumbs, and Par). The apical (Crumbs and Par) and basolateral (Scrib) modules function in a mutually antagonistic relationship to regulate various polarization processes such as apical-basal polarity, planar cell polarity, asymmetric cell division and migration. The loss of SCRIB in malignant tumors suggest that it has potential to be a tumor suppressor. Alteration of polarity through deletion, downregulation, overexpression, and mislocalization can induce structural and functional alteration of cells that might be related to tumorigenesis. Mislocalization of SCRIB is involved in epithelial-to-mesenchymal transition (EMT) by inducing loss of E-cadherin. Deregulated SCRIB expression induces tumorigenesis in breast and liver. (PMID: 28460446, PMID: 32564009)

Storage

Storage:
Store at -20°C. Stable for one year after shipment.
Storage Buffer:
PBS with 0.02% sodium azide and 50% glycerol pH 7.3.
Aliquoting is unnecessary for -20°C storage

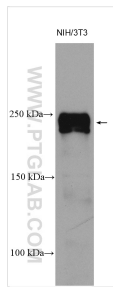
For technical support and original validation data for this product please contact:

T: 1 (888) 4PTGLAB (1-888-478-4522) (toll free in USA), or 1(312) 455-8498 (outside USA)

E: proteintech@ptglab.com
W: ptglab.com

This product is exclusively available under Proteintech Group brand and is not available to purchase from any other manufacturer.

Selected Validation Data



NIH/3T3 cells were subjected to SDS PAGE followed by western blot with 27083-1-AP (SCRIB antibody) at dilution of 1:6000 incubated at room temperature for 1.5 hours.