

For Research Use Only

RAB10 Polyclonal antibody

Catalog Number: 27094-1-AP

Featured Product

2 Publications



Basic Information

Catalog Number:

27094-1-AP

Size:

150ul, Concentration: 650 ug/ml by Nanodrop and 333 ug/ml by Bradford method using BSA as the standard;

Source:

Rabbit

Isotype:

IgG

Immunogen Catalog Number:

AG25830

GenBank Accession Number:

BC000896

GeneID (NCBI):

10890

UNIPROT ID:

P61026

Full Name:

RAB10, member RAS oncogene family

Calculated MW:

200 aa, 23 kDa

Observed MW:

23 kDa

Purification Method:

Antigen affinity purification

Recommended Dilutions:

WB: 1:1000-1:6000

IHC: 1:50-1:500

IF/ICC: 1:50-1:500

FC (Intra): 0.40 ug per 10⁶ cells in a 100 µl suspension

Applications

Tested Applications:

WB, IHC, IF/ICC, FC (Intra), ELISA

Cited Applications:

WB, IF

Species Specificity:

human, mouse, rat, canine

Cited Species:

human, mouse

Note-IHC: suggested antigen retrieval with TE buffer pH 9.0; (*) Alternatively, antigen retrieval may be performed with citrate buffer pH 6.0

Positive Controls:

WB: MCF-7 cells, HeLa cells, MDCK cells, mouse brain tissue, rat brain tissue

IHC: human colon tissue,

IF/ICC: NIH/3T3 cells, MCF-7 cells

FC (Intra): HeLa cells,

Background Information

RAB10 is a member of the RAB family of small GTPases, which are key regulators of vesicular trafficking. RAB proteins are cyclically controlled, requiring a GDP-GTP exchange that is facilitated by RAB guanine nucleotide exchange factors. Rab10 plays essential functional roles in development: mice are embryonic lethal when both alleles are deleted. In addition, RAB10 plays a role in maintenance and regulation of endoplasmic reticulum (ER) morphology. RAB10 function has also been linked to neuronal morphology and polarization, playing a critical role in axonal development and dendrite arborization.

Notable Publications

Author	Pubmed ID	Journal	Application
Tatsuo Miyamoto	32368833	EMBO J	WB
Miku Fukawa	37137223	Biochem Biophys Res Commun	IF

Storage

Storage:

Store at -20°C. Stable for one year after shipment.

Storage Buffer:

PBS with 0.02% sodium azide and 50% glycerol, pH7.3

Aliquoting is unnecessary for -20°C storage

*** 20ul sizes contain 0.1% BSA

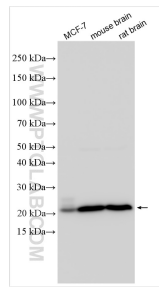
For technical support and original validation data for this product please contact:

T: 1 (888) 4PTGLAB (1-888-478-4522) (toll free in USA), or 1(312) 455-8498 (outside USA)

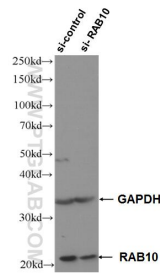
E: proteintech@ptglab.com
W: ptglab.com

This product is exclusively available under Proteintech Group brand and is not available to purchase from any other manufacturer.

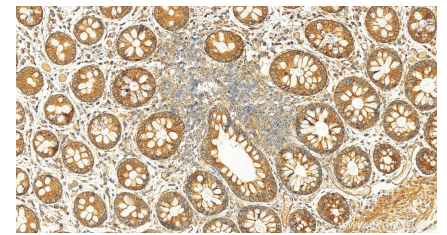
Selected Validation Data



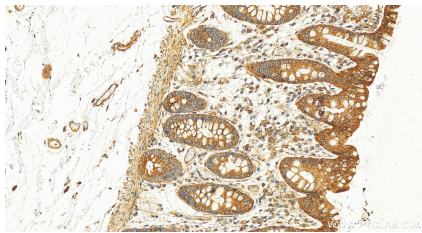
Various lysates were subjected to SDS PAGE followed by western blot with 27094-1-AP (RAB10 antibody) at dilution of 1:3000 incubated at room temperature for 1.5 hours.



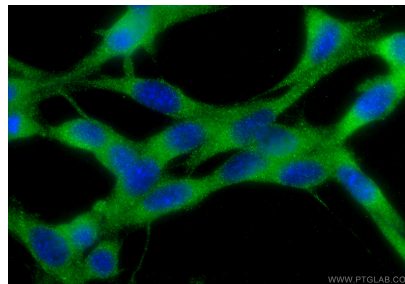
WB result of RAB10 antibody (27094-1-AP; 1:4000; incubated at room temperature for 1.5 hours) with sh-Control and sh-RAB10 transfected HeLa cells.



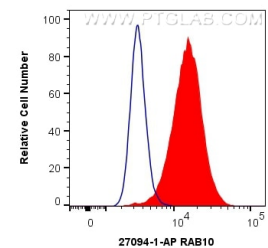
Immunohistochemical analysis of paraffin-embedded human normal colon slide using 27094-1-AP (RAB10 antibody) at dilution of 1:200 (under 20x lens). Heat mediated antigen retrieval with Tris-EDTA buffer (pH 9.0).



Immunohistochemical analysis of paraffin-embedded human normal colon slide using 27094-1-AP (RAB10 antibody) at dilution of 1:200 (under 20x lens). Heat mediated antigen retrieval with Tris-EDTA buffer (pH 9.0).



Immunofluorescent analysis of (-20°C Ethanol) fixed NIH/3T3 cells using RAB10 antibody (27094-1-AP) at dilution of 1:200 and CoraLite®488-Conjugated Goat Anti-Rabbit IgG(H+L) (SA00013-2).



1X10⁶ HeLa cells were intracellularly stained with 0.4 ug Anti-Human RAB10 (27094-1-AP) and CoraLite®488-Conjugated AffiniPure Goat Anti-Rabbit IgG(H+L) at dilution 1:1000 (red), or 0.4 ug Control Antibody. Cells were fixed with 4% PFA and permeabilized with Flow Cytometry Perm Buffer (PF00011-C).