

For Research Use Only

# CCDC124 Polyclonal antibody

Catalog Number: 27106-1-AP



## Basic Information

**Catalog Number:**

27106-1-AP

**Size:**

150ul , Concentration: 300 µg/ml by Bradford method using BSA as the standard;

**Source:**

Rabbit

**Isotype:**

IgG

**Immunogen Catalog Number:**

AG25930

**GenBank Accession Number:**

BC013949

**GeneID (NCBI):**

115098

**Full Name:**

coiled-coil domain containing 124

**Observed MW:**

30-32 kDa

**Purification Method:**

Antigen affinity purification

**Recommended Dilutions:**

WB 1:1000-1:4000

IF 1:50-1:500

## Applications

**Tested Applications:**

IF, WB, ELISA

**Species Specificity:**

human, mouse

**Positive Controls:**

WB : mouse brain tissue, human placenta tissue, mouse liver tissue

IF : HeLa cells,

## Background Information

CCDC124 is a novel centrosomal and midbody protein that is highly conserved among species. It is ubiquitously expressed with high expression in brain, placenta, liver, spleen, and prostate. At telophase, CCDC124 dissociates from centrosomes and relocalizes to the midzone, subsequently accumulating at the midbody at cytokinesis. It interacts with the Ras-guanine nucleotide exchange factor 1B (RasGEF1B) and is involved in cytokinesis.

## Storage

**Storage:**

Store at -20°C. Stable for one year after shipment.

**Storage Buffer:**

PBS with 0.02% sodium azide and 50% glycerol pH 7.3.

Aliquoting is unnecessary for -20°C storage

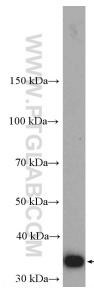
For technical support and original validation data for this product please contact:

T: 1 (888) 4PTGLAB (1-888-478-4522) (toll free in USA), or 1(312) 455-8498 (outside USA)

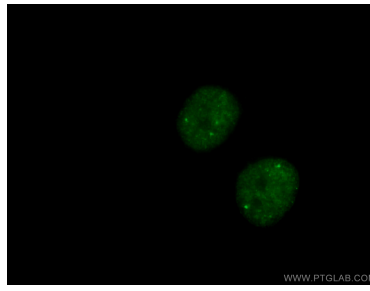
E: [proteintech@ptglab.com](mailto:proteintech@ptglab.com)  
W: [ptglab.com](http://ptglab.com)

**This product is exclusively available under Proteintech Group brand and is not available to purchase from any other manufacturer.**

## Selected Validation Data



mouse brain tissue were subjected to SDS PAGE followed by western blot with 27106-1-AP (CCDC124 Antibody) at dilution of 1:2000 incubated at room temperature for 1.5 hours.



Immunofluorescent analysis of (-20°C Ethanol) fixed HeLa cells using 27106-1-AP (CCDC124 antibody) at dilution of 1:50 and Alexa Fluor 488-conjugated AffiniPure Goat Anti-Rabbit IgG(H+L).