

For Research Use Only

ALMS1 Polyclonal antibody

Catalog Number: 27231-1-AP



Basic Information

Catalog Number:

27231-1-AP

Size:

150ul, Concentration: 500 µg/ml by Nanodrop and 347 µg/ml by Bradford method using BSA as the standard;

Source:

Rabbit

Isotype:

IgG

Immunogen Catalog Number:

AG26100

GenBank Accession Number:

NM_015120

GeneID (NCBI):

7840

Full Name:

Alstrom syndrome 1

Calculated MW:

461 kDa

Purification Method:

Antigen affinity purification

Recommended Dilutions:

IF 1:50-1:500

Applications

Tested Applications:

FC, IF, ELISA

Species Specificity:

human

Positive Controls:

IF : HeLa cells,

Background Information

Storage

Storage:

Store at -20°C. Stable for one year after shipment.

Storage Buffer:

PBS with 0.02% sodium azide and 50% glycerol pH 7.3.

Aliquoting is unnecessary for -20°C storage

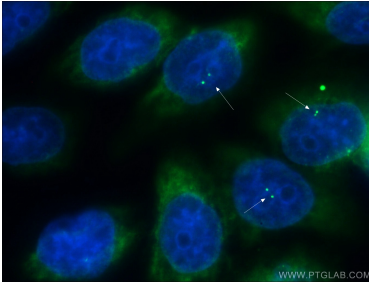
For technical support and original validation data for this product please contact:

T: 1 (888) 4PTGLAB (1-888-478-4522) (toll free in USA), or 1(312) 455-8498 (outside USA)

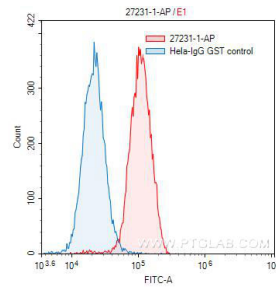
E: proteintech@ptglab.com
W: ptglab.com

This product is exclusively available under Proteintech Group brand and is not available to purchase from any other manufacturer.

Selected Validation Data



Immunofluorescent analysis of (-20°C Ethanol) fixed HeLa cells using 27231-1-AP (ALMS1 antibody) at dilution of 1:50 and Alexa Fluor 488-conjugated AffiniPure Goat Anti-Rabbit IgG(H+L).



1×10^6 HeLa cells were stained with 0.20ug ALMS1 antibody (27231-1-AP, red) and control antibody (blue). Fixed with 90% MeOH.