

For Research Use Only

Occludin Polyclonal antibody

Catalog Number: 27260-1-AP

664 Publications



Basic Information

Catalog Number:

27260-1-AP

Size:

150ul, Concentration: 1000 ug/ml by Nanodrop;

Source:

Rabbit

Isotype:

IgG

Immunogen Catalog Number:

AG26173

GenBank Accession Number:

BC029886

GeneID (NCBI):

4950

UNIPROT ID:

Q16625

Full Name:

occludin

Calculated MW:

522 aa, 59 kDa

Observed MW:

59 kDa, 32 kDa, 23-25 kDa

Purification Method:

Antigen affinity purification

Recommended Dilutions:

WB: 1:5000-1:50000

IP: 0.5-4.0 ug for 1.0-3.0 mg of total protein lysate

IHC: 1:1000-1:10000

IF-Fro: 1:50-1:500

IF/ICC: 1:500-1:2000

Applications

Tested Applications:

WB, IHC, IF/ICC, IF-Fro, IP, ELISA

Cited Applications:

WB, IHC, IF, IP, IHC-IF

Species Specificity:

human, mouse, rat

Cited Species:

human, mouse, rat, pig, rabbit, canine, chicken, bovine, goat, duck

Note-IHC: suggested antigen retrieval with TE buffer pH 9.0; (*) Alternatively, antigen retrieval may be performed with citrate buffer pH 6.0

Positive Controls:

WB: HUVEC cells, HepG2 cells, mouse kidney tissue, mouse liver tissue, rat liver tissue, mouse brain tissue, mouse colon tissue, rat brain tissue

IP: HUVEC cells,

IHC: human colon tissue, human breast cancer tissue, human kidney tissue

IF-Fro: mouse brain tissue,

IF/ICC: Caco-2 cells, MCF-7 cells

Background Information

Occludin is an integral membrane protein located at the tight junction. It is a tetraspanin protein with four transmembrane domains, intracellular N and C termini, and two extracellular loops. Occludin plays a role in the formation and regulation of the tight junction paracellular permeability barrier. Occludin can exist in different isoforms, owing to modifications at the posttranscriptional and posttranslational levels, the monomeric occludin migrates as 53-65 kDa on SDS-PAGE (PMID: 22083955; 19457074).

Notable Publications

Author	Pubmed ID	Journal	Application
Susu Lin	36169685	Psychopharmacology (Berl)	IHC
Yuan-Wei Zhang	36196151	J Orthop Translat	WB, IHC
Jianping Li	36240652	Biochem Biophys Res Commun	WB

Storage

Storage:

Store at -20°C. Stable for one year after shipment.

Storage Buffer:

PBS with 0.02% sodium azide and 50% glycerol, pH7.3

Aliquoting is unnecessary for -20°C storage

*** 20ul sizes contain 0.1% BSA

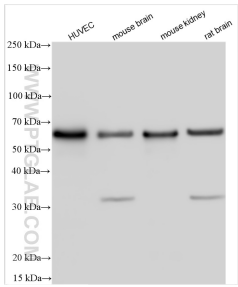
For technical support and original validation data for this product please contact:

T: 1 (888) 4PTGLAB (1-888-478-4522) (toll free in USA), or 1(312) 455-8498 (outside USA)

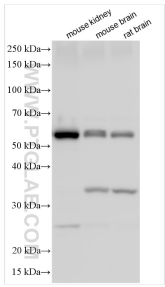
E: proteintech@ptglab.com
W: ptglab.com

This product is exclusively available under Proteintech Group brand and is not available to purchase from any other manufacturer.

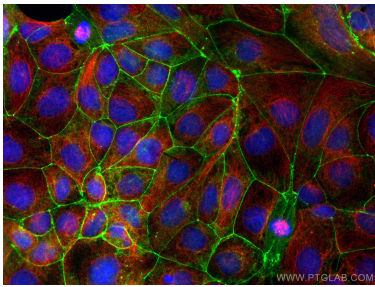
Selected Validation Data



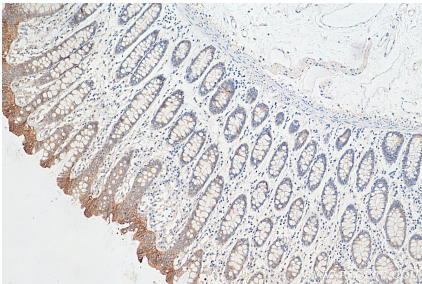
Various lysates were subjected to SDS PAGE followed by western blot with 27260-1-AP (Occludin antibody) at dilution of 1:25000 incubated at room temperature for 1.5 hours.



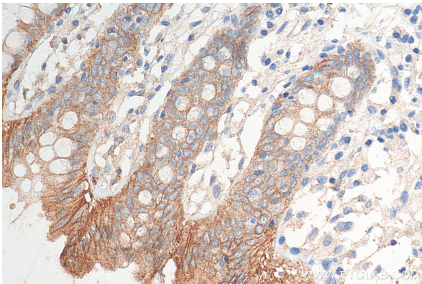
Various lysates were subjected to SDS PAGE followed by western blot with 27260-1-AP (Occludin antibody) at dilution of 1:25000 incubated at room temperature for 1.5 hours.



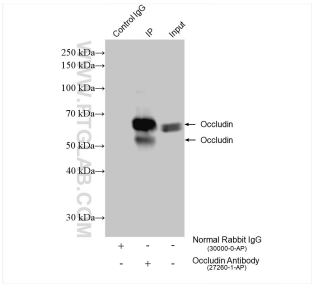
Immunofluorescent analysis of (4% PFA) fixed Caco-2 cells using Occludin antibody (27260-1-AP) at dilution of 1:1000 and CoraLite®488-Conjugated AffiniPure Goat Anti-Rabbit IgG(H+L) (SA00013-2), Alpha Tubulin antibody (66031-1-Ig, Clone: 1E4C11, red).



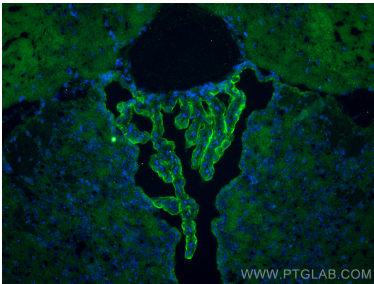
Immunohistochemical analysis of paraffin-embedded human colon tissue slide using 27260-1-AP (Occludin antibody) at dilution of 1:8000 (under 10x lens). Heat mediated antigen retrieval with Tris-EDTA buffer (pH 9.0).



Immunohistochemical analysis of paraffin-embedded human colon tissue slide using 27260-1-AP (Occludin antibody) at dilution of 1:8000 (under 40x lens). Heat mediated antigen retrieval with Tris-EDTA buffer (pH 9.0).



IP result of anti-Occludin (IP:27260-1-AP, 4ug; Detection:27260-1-AP 1:2000) with HUVEC cells lysate 840 ug.



Immunofluorescent analysis of (4% PFA) fixed frozen OCT-embedded mouse brain tissue using Occludin antibody (27260-1-AP) at dilution of 1:200 and CoraLite®488-Conjugated Goat Anti-Rabbit IgG(H+L) (SA00013-2).