

For Research Use Only

calreticulin Polyclonal antibody

Catalog Number: 27298-1-AP

Featured Product

70 Publications



Basic Information

Catalog Number:

27298-1-AP

Size:

150ul, Concentration: 530 ug/ml by Nanodrop;

Source:

Rabbit

Isotype:

IgG

Immunogen Catalog Number:

AG26064

GenBank Accession Number:

BC002500

GeneID (NCBI):

811

UNIPROT ID:

P27797

Full Name:

calreticulin

Calculated MW:

60 kDa

Observed MW:

55 kDa

Purification Method:

Antigen affinity purification

Recommended Dilutions:

WB: 1:2000-1:10000

IHC: 1:50-1:500

IF/ICC: 1:50-1:500

FC (Intra): 0.40 ug per 10⁶ cells in a 100 µl suspension

Applications

Tested Applications:

WB, IHC, IF/ICC, FC (Intra), ELISA

Cited Applications:

WB, IHC, IF

Species Specificity:

human, mouse, rat

Cited Species:

human, mouse, rat, monkey

Note-IHC: suggested antigen retrieval with TE buffer pH 9.0; (*) Alternatively, antigen retrieval may be performed with citrate buffer pH 6.0

Positive Controls:

WB: HeLa cells, C6 cells, mouse skeletal muscle tissue, NIH/3T3 cells, mouse brain tissue, rat brain tissue, SH-SY5Y cells

IHC: human thyroid tissue, human normal colon

IF/ICC: HepG2 cells, SKOV-3 cells, HeLa cells

FC (Intra): HeLa cells,

Background Information

CALR, also named as grp60, ERp60, HACBP, CRP55, CRTC and Calregulin, belongs to the calreticulin family. It is a molecular calcium-binding chaperone promoting folding, oligomeric assembly and quality control in the ER via the calreticulin/calnexin cycle. CALR is a ER marker. It interacts transiently with almost all of the monoglucosylated glycoproteins that are synthesized in the ER. CALR interacts with the DNA-binding domain of NR3C1 and mediates its nuclear export. The MW of CALR migrates aberrantly at 60 kD by SDS-PAGE. Some study provided that it's a new possibility for CRT-mediated tumor immune prevention and treatment.

Notable Publications

Author	Pubmed ID	Journal	Application
Wei Cai	36170234	Autophagy	IF
Yu Chen	34592660	Cell Calcium	WB, IF
Xianglong Yu	36109853	ACS Appl Mater Interfaces	WB

Storage

Storage:

Store at -20°C. Stable for one year after shipment.

Storage Buffer:

PBS with 0.02% sodium azide and 50% glycerol, pH7.3

Aliquoting is unnecessary for -20°C storage

*** 20ul sizes contain 0.1% BSA

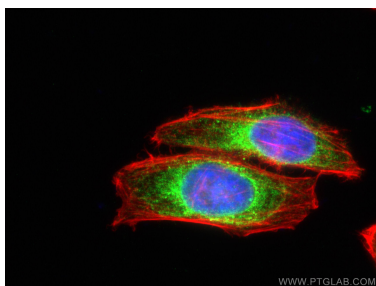
For technical support and original validation data for this product please contact:

T: 1 (888) 4PTGLAB (1-888-478-4522) (toll free in USA), or 1(312) 455-8498 (outside USA)

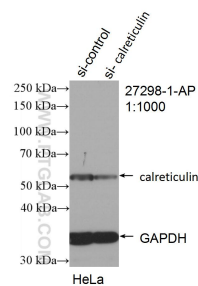
E: proteintech@ptglab.com
W: ptglab.com

This product is exclusively available under Proteintech Group brand and is not available to purchase from any other manufacturer.

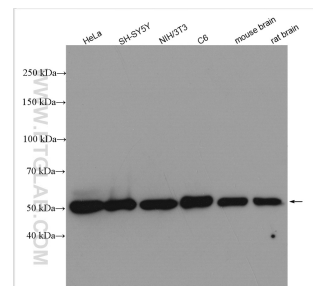
Selected Validation Data



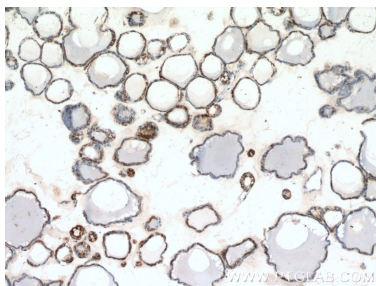
Immunofluorescent analysis of (4% PFA) fixed HepG2 cells using Calreticulin antibody (27298-1-AP) at dilution of 1:200 and CoraLite®488-Conjugated AffiniPure Goat Anti-Rabbit IgG(H+L), CL594-Phalloidin (red).



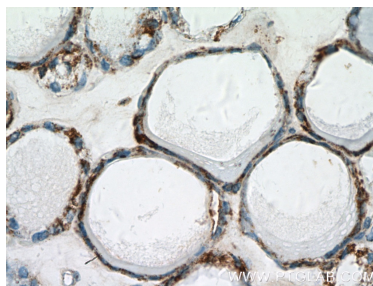
WB result of Calreticulin antibody (27298-1-AP; 1:1000; incubated at room temperature for 1.5 hours) with sh-Control and sh-Calreticulin transfected HeLa cells.



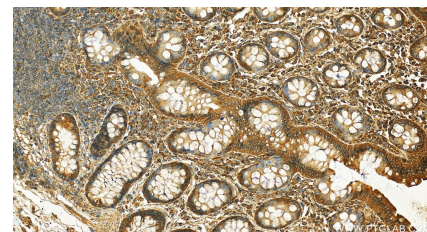
Various lysates were subjected to SDS PAGE followed by western blot with 27298-1-AP (Calreticulin antibody) at dilution of 1:5000 incubated at room temperature for 1.5 hours.



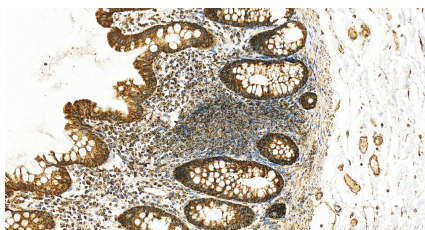
Immunohistochemical analysis of paraffin-embedded human thyroid tissue slide using 27298-1-AP (calreticulin Antibody) at dilution of 1:200 (under 10x lens).



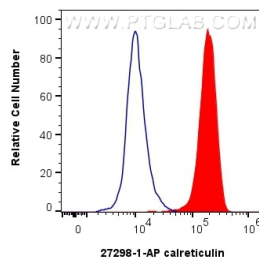
Immunohistochemical analysis of paraffin-embedded human thyroid tissue slide using 27298-1-AP (calreticulin Antibody) at dilution of 1:200 (under 40x lens).



Immunohistochemical analysis of paraffin-embedded human colon tissue slide using 27298-1-AP (calreticulin antibody) at dilution of 1:1000 (under 20x lens). Heat mediated antigen retrieval with Tris-EDTA buffer (pH 9.0).



Immunohistochemical analysis of paraffin-embedded human normal colon slide using 27298-1-AP (calreticulin antibody) at dilution of 1:1000 (under 20x lens). Heat mediated antigen retrieval with Tris-EDTA buffer (pH 9.0).



1x10⁶ HeLa cells were intracellularly stained with 0.4 ug calreticulin Polyclonal antibody (27298-1-AP) and CoraLite®488-Conjugated AffiniPure Goat Anti-Rabbit IgG(H+L) (SA00013-2)(red), or 0.4 ug Rabbit IgG control Rabbit PolyAb (30000-O-AP) (blue). Cells were fixed with 4% PFA and permeabilized with Flow Cytometry Perm Buffer (PF00011-C).