

For Research Use Only

NODAL Polyclonal antibody

Catalog Number: 27430-1-AP



Basic Information

Catalog Number: 27430-1-AP	GenBank Accession Number: BC104976	Purification Method: Antigen affinity purification
Size: 150ul , Concentration: 200 ug/ml by Nanodrop;	GeneID (NCBI): 4838	Recommended Dilutions: WB 1:1000-1:4000
Source: Rabbit	UNIPROT ID: Q96S42	IHC 1:50-1:500
Isotype: IgG	Full Name: nodal homolog (mouse)	IF/ICC 1:200-1:800
Immunogen Catalog Number: AG26729	Calculated MW: 347 aa, 40 kDa	
	Observed MW: 45 kDa	

Applications

Tested Applications: WB, IHC, IF/ICC, FC (Intra), ELISA	Positive Controls:
Species Specificity: human	WB : HeLa cells,
Note-IHC: suggested antigen retrieval with TE buffer pH 9.0; (*) Alternatively, antigen retrieval may be performed with citrate buffer pH 6.0	IHC : human stomach cancer tissue, human endometrial cancer tissue
	IF/ICC : HeLa cells,

Background Information

Nodal is a member of the transforming growth factor- β (TGF- β) superfamily that plays critical roles during embryogenesis. Nodal also regulates cell proliferation, apoptosis, and invasion in cancer cells. However, it appears to exert both tumor-suppressing and tumor-promoting effects, depending on the cell type (PMID: 22645523). Nodal signals through ALK7 receptor to inhibit proliferation and to induce apoptosis in ovarian cancer cell lines and breast cancer cell lines (PMID: 15531507, PMID: 21383881).

Storage

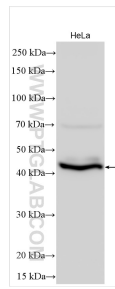
Storage:
Store at -20°C. Stable for one year after shipment.
Storage Buffer:
PBS with 0.02% sodium azide and 50% glycerol pH 7.3.
Aliquoting is unnecessary for -20°C storage

*** 20ul sizes contain 0.1% BSA

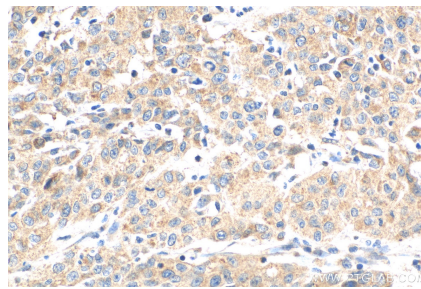
For technical support and original validation data for this product please contact:
T: 1 (888) 4PTGLAB (1-888-478-4522) (toll free in USA), or 1(312) 455-8498 (outside USA)
E: proteintech@ptglab.com
W: ptglab.com

This product is exclusively available under Proteintech Group brand and is not available to purchase from any other manufacturer.

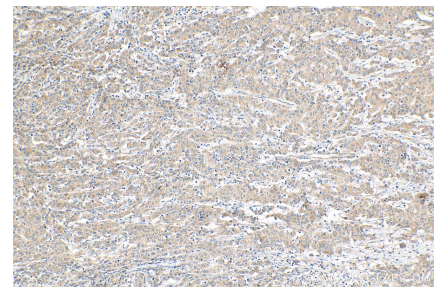
Selected Validation Data



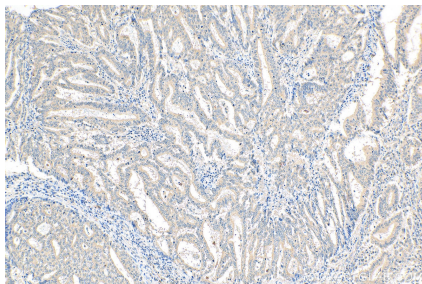
HeLa cells were subjected to SDS PAGE followed by western blot with 27430-1-AP (NODAL antibody) at dilution of 1:2000 incubated at room temperature for 1.5 hours.



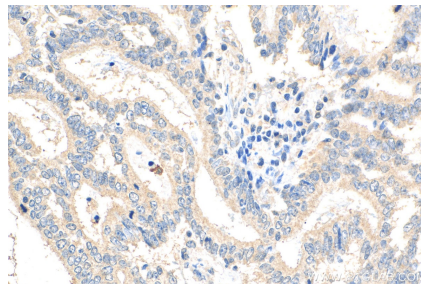
Immunohistochemical analysis of paraffin-embedded human stomach cancer tissue slide using 27430-1-AP (NODAL antibody) at dilution of 1:200 (under 40x lens). Heat mediated antigen retrieval with Tris-EDTA buffer (pH 9.0).



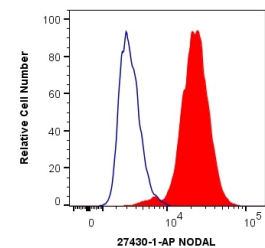
Immunohistochemical analysis of paraffin-embedded human stomach cancer tissue slide using 27430-1-AP (NODAL antibody) at dilution of 1:200 (under 10x lens). Heat mediated antigen retrieval with Tris-EDTA buffer (pH 9.0).



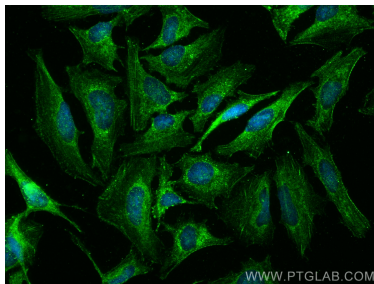
Immunohistochemical analysis of paraffin-embedded human endometrial cancer tissue slide using 27430-1-AP (NODAL antibody) at dilution of 1:200 (under 10x lens). Heat mediated antigen retrieval with Tris-EDTA buffer (pH 9.0).



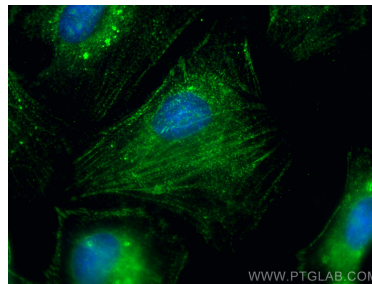
Immunohistochemical analysis of paraffin-embedded human endometrial cancer tissue slide using 27430-1-AP (NODAL antibody) at dilution of 1:200 (under 40x lens). Heat mediated antigen retrieval with Tris-EDTA buffer (pH 9.0).



1x10⁶ HEK-293T cells were intracellularly stained with 0.4 ug Anti-Human NODAL (27430-1-AP) and CoraLite®488-Conjugated AffiniPure Goat Anti-Rabbit IgG(H+L) at dilution 1:1000 (red), or 0.4 ug Isotype Control. Cells were fixed with 4% PFA and permeabilized with Flow Cytometry Perm Buffer (PF00011-C).



Immunofluorescent analysis of (-20°C Ethanol) fixed HeLa cells using NODAL antibody (27430-1-AP) at dilution of 1:400 and CoraLite®488-Conjugated AffiniPure Goat Anti-Rabbit IgG(H+L).



Immunofluorescent analysis of (-20°C Ethanol) fixed HeLa cells using NODAL antibody (27430-1-AP) at dilution of 1:400 and Multi-rAb CoraLite® Plus 488-Goat Anti-Rabbit Recombinant Secondary Antibody (H+L) (RGAR002).