

For Research Use Only

ATG4A Polyclonal antibody

Catalog Number: 27467-1-AP

1 Publications



Basic Information

Catalog Number: 27467-1-AP	GenBank Accession Number: BC061696	Purification Method: Antigen affinity purification
Size: 150UL, Concentration: 400 µg/ml by Nanodrop and 267 µg/ml by Bradford method using BSA as the standard;	GeneID (NCBI): 115201	Recommended Dilutions: WB 1:500-1:1500 IHC 1:50-1:500
Source: Rabbit	Full Name: ATG4 autophagy related 4 homolog A (S. cerevisiae)	
Isotype: IgG	Calculated MW: 45 kDa	
Immunogen Catalog Number: AG26497	Observed MW: 45 kDa	

Applications

Tested Applications: IHC, WB, ELISA	Positive Controls: WB : L02 cells, MKN-45 cells IHC : human stomach cancer tissue,
Cited Applications: WB	
Species Specificity: human	
Cited Species: human	
Note-IHC: suggested antigen retrieval with TE buffer pH 9.0; (*) Alternatively, antigen retrieval may be performed with citrate buffer pH 6.0	

Background Information

ATG4, a member of the cysteine protease family, plays an important role in autophagy induction. ATG4 enzymes cleave the C-terminal amino acid of ATG8 family proteins to reveal a C-terminal glycine that is essential for ATG8 proteins conjugation to phosphatidylethanolamine (PE) and insertion to membranes. ATG4A, which may be a target for cancer prevention and intervention, has been reported to be related to breast tumorigenesis, lung cancer, ovarian cancer, cervical cancer and gastric cancer. (PMID: 27276686, 29435029, 28636635)

Notable Publications

Author	Pubmed ID	Journal	Application
Zhenhong Ni	31285423	Cell Death Dis	WB

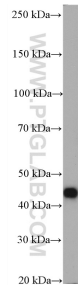
Storage

Storage:
Store at -20°C. Stable for one year after shipment.
Storage Buffer:
PBS with 0.02% sodium azide and 50% glycerol pH 7.3.
Aliquoting is unnecessary for -20°C storage

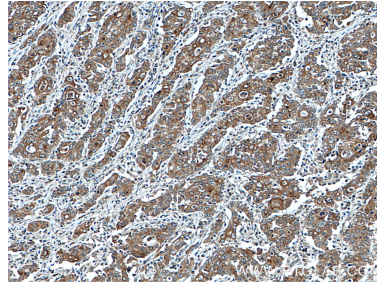
For technical support and original validation data for this product please contact:
T: 1 (888) 4PTGLAB (1-888-478-4522) (toll free in USA), or 1(312) 455-8498 (outside USA)
E: proteintech@ptglab.com
W: ptglab.com

This product is exclusively available under Proteintech Group brand and is not available to purchase from any other manufacturer.

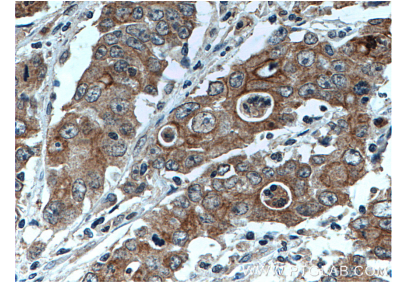
Selected Validation Data



L02 cells were subjected to SDS PAGE followed by western blot with 27467-1-AP (ATG4A antibody) at dilution of 1:1500 incubated at room temperature for 1.5 hours.



Immunohistochemical analysis of paraffin-embedded human stomach cancer tissue slide using 27467-1-AP (ATG4A antibody) at dilution of 1:200 (under 10x lens. Heat mediated antigen retrieval with Tris-EDTA buffer (pH 9.0).



Immunohistochemical analysis of paraffin-embedded human stomach cancer tissue slide using 27467-1-AP (ATG4A antibody) at dilution of 1:200 (under 40x lens. Heat mediated antigen retrieval with Tris-EDTA buffer (pH 9.0).