

For Research Use Only

COPB1 Polyclonal antibody

Catalog Number: 27469-1-AP



Basic Information

Catalog Number:

27469-1-AP

Size:

150ul , Concentration: 650 µg/ml by Nanodrop and 367 µg/ml by Bradford method using BSA as the standard;

Source:

Rabbit

Isotype:

IgG

Immunogen Catalog Number:

AG26518

GenBank Accession Number:

BC037280

GeneID (NCBI):

1315

Full Name:

coatamer protein complex, subunit beta 1

Calculated MW:

107 kDa

Observed MW:

95-100 kDa

Purification Method:

Antigen affinity purification

Recommended Dilutions:

WB 1:1000-1:4000

Applications

Tested Applications:

WB,ELISA

Species Specificity:

human, mouse, rat

Positive Controls:

WB : HEK-293 cells, HeLa cells, mouse brain tissue, mouse liver tissue

Background Information

Storage

Storage:

Store at -20°C. Stable for one year after shipment.

Storage Buffer:

PBS with 0.02% sodium azide and 50% glycerol pH 7.3.

Aliquoting is unnecessary for -20°C storage

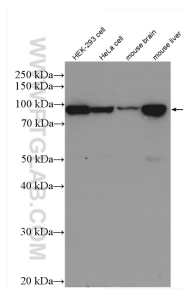
For technical support and original validation data for this product please contact:

T: 1 (888) 4PTGLAB (1-888-478-4522) (toll free in USA), or 1(312) 455-8498 (outside USA)

E: proteintech@ptglab.com
W: ptglab.com

This product is exclusively available under Proteintech Group brand and is not available to purchase from any other manufacturer.

Selected Validation Data



Various lysates were subjected to SDS PAGE followed by western blot with 27469-1-AP (COPB1 antibody) at dilution of 1:2000 incubated at room temperature for 1.5 hours.