

Calsequestrin 2 Polyclonal antibody

Catalog Number: 27560-1-AP

Basic Information

Catalog Number:

27560-1-AP

Size:

150ul, Concentration: 600 µg/ml by Nanodrop and 333 µg/ml by Bradford method using BSA as the standard;

Source:

Rabbit

Isotype:

IgG

Immunogen Catalog Number:

AG26412

GenBank Accession Number:

BC022288

GeneID (NCBI):

845

UNIPROT ID:

O14958

Full Name:

calsequestrin 2 (cardiac muscle)

Calculated MW:

46 kDa

Observed MW:

50 kDa

Purification Method:

Antigen affinity purification

Recommended Dilutions:

WB 1:1000-1:4000

IP 0.5-4.0 µg for 1.0-3.0 mg of total protein lysate

IHC 1:50-1:500

Applications

Tested Applications:

WB, IP, IHC, ELISA

Species Specificity:

Human, mouse, rat

Note-IHC: suggested antigen retrieval with TE buffer pH 9.0; (*) Alternatively, antigen retrieval may be performed with citrate buffer pH 6.0

Positive Controls:

WB : mouse heart tissue,

IP : mouse heart tissue,

IHC : human heart tissue, human skeletal muscle tissue

Background Information

Calsequestrin 2 (CASQ2) specifies the cardiac muscle family member of the calsequestrin family. Calsequestrin is localized to the sarcoplasmic reticulum in cardiac and slow skeletal muscle cells. CASQ2 is an important component of calcium handling as a calcium storage protein in the sarcoplasmic reticulum (SR), playing an important role in the regulation of the cardiac ryanodine receptor (RyR2)-mediated calcium release and SR calcium release refractoriness. Mutations in CASQ2 cause stress-induced polymorphic ventricular tachycardia, also referred to as catecholaminergic polymorphic ventricular tachycardia 2 (CPVT2), a disease characterized by bidirectional ventricular tachycardia that may lead to cardiac arrest.

Storage

Storage:

Store at -20°C. Stable for one year after shipment.

Storage Buffer:

PBS with 0.02% sodium azide and 50% glycerol pH 7.3.

Aliquoting is unnecessary for -20°C storage

***** 20ul sizes contain 0.1% BSA**

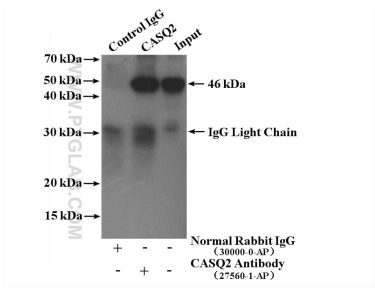
For technical support and original validation data for this product please contact:

T: 1 (888) 4PTGLAB (1-888-478-4522) (toll free in USA), or 1(312) 455-8498 (outside USA)

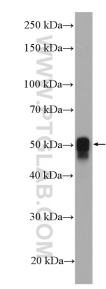
E: proteintech@ptglab.comW: ptglab.com

This product is exclusively available under Proteintech Group brand and is not available to purchase from any other manufacturer.

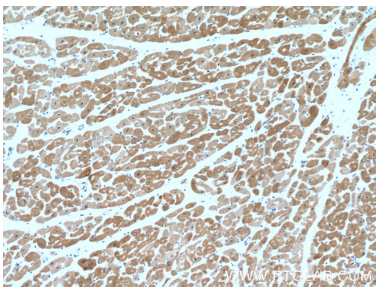
Selected Validation Data



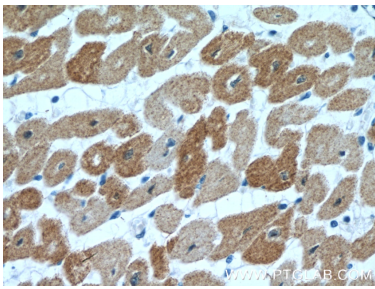
IP result of anti-Calsequestrin 2 (IP:27560-1-AP, 4ug; Detection:27560-1-AP 1:1000) with mouse heart tissue lysate 3720 ug.



mouse heart tissue were subjected to SDS PAGE followed by western blot with 27560-1-AP (Calsequestrin 2 antibody) at dilution of 1:2000 incubated at room temperature for 1.5 hours.



Immunohistochemical analysis of paraffin-embedded human heart tissue slide using 27560-1-AP (Calsequestrin 2 antibody) at dilution of 1:200 (under 10x lens).



Immunohistochemical analysis of paraffin-embedded human heart tissue slide using 27560-1-AP (Calsequestrin 2 antibody) at dilution of 1:200 (under 40x lens).