

For Research Use Only

RSL1D1 Polyclonal antibody

Catalog Number: 27667-1-AP



Basic Information

Catalog Number: 27667-1-AP	GenBank Accession Number: BC112228	Purification Method: Antigen affinity purification
Size: 150ul , Concentration: 450 ug/ml by Nanodrop;	GeneID (NCBI): 26156	Recommended Dilutions: WB 1:500-1:3000 IHC 1:200-1:800
Source: Rabbit	UNIPROT ID: O76021	
Isotype: IgG	Full Name: ribosomal L1 domain containing 1	
Immunogen Catalog Number: AG24923	Calculated MW: 490 aa, 55 kDa	
	Observed MW: 55-70 kDa	

Applications

Tested Applications: WB, IHC, ELISA	Positive Controls:
Species Specificity: Human, mouse	WB : U-251 cells, HCT 116 cells, HEK-293 cells, SW480 cells, K-562 cells, HepG2 cells, PC-3 cells
Note-IHC: suggested antigen retrieval with TE buffer pH 9.0; (*) Alternatively, antigen retrieval may be performed with citrate buffer pH 6.0	IHC : mouse colon tissue,

Background Information

RL1D1, Ribosomal L1 domain-containing protein 1, also named CSIG, a member of the universal ribosomal protein uL1 family. RL1D1 regulates cellular senescence through inhibition of PTEN translation. It acts as a pro-apoptotic regulator in response to DNA damage (PMID: 18678645, PMID: 22419112). RSL1D1 promoted the progression of colorectal cancer through RAN-mediated autophagy suppression. RSL1D1 can be detected 70 kDa (PMID:35013134).

Storage

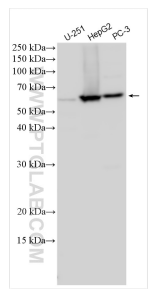
Storage:
Store at -20°C. Stable for one year after shipment.
Storage Buffer:
PBS with 0.02% sodium azide and 50% glycerol pH 7.3.
Aliquoting is unnecessary for -20°C storage

*** 20ul sizes contain 0.1% BSA

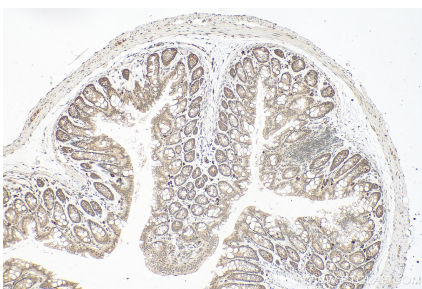
For technical support and original validation data for this product please contact:
T: 1 (888) 4PTGLAB (1-888-478-4522) (toll free in USA), or 1(312) 455-8498 (outside USA)
E: proteintech@ptglab.com
W: ptglab.com

This product is exclusively available under Proteintech Group brand and is not available to purchase from any other manufacturer.

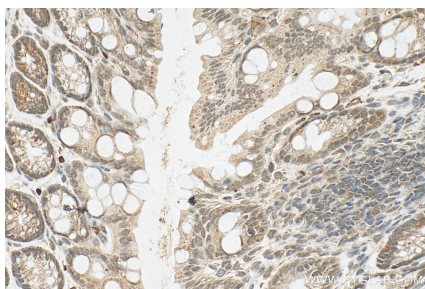
Selected Validation Data



Various lysates were subjected to SDS PAGE followed by western blot with 27667-1-AP (RSL1D1 antibody) at dilution of 1:1500 incubated at room temperature for 1.5 hours.



Immunohistochemical analysis of paraffin-embedded mouse colon tissue slide using 27667-1-AP (RSL1D1 antibody) at dilution of 1:400 (under 10x lens). Heat mediated antigen retrieval with Tris-EDTA buffer (pH 9.0).



Immunohistochemical analysis of paraffin-embedded mouse colon tissue slide using 27667-1-AP (RSL1D1 antibody) at dilution of 1:400 (under 40x lens). Heat mediated antigen retrieval with Tris-EDTA buffer (pH 9.0).