

For Research Use Only

ETHE1 Polyclonal ANTIBODY

Catalog Number: 27786-1-AP



Basic Information

Catalog Number:
27786-1-AP

Size:
35 µg/150 µl

Source:
Rabbit

Isotype:
IgG

Purification Method:
Antigen affinity purification

Immunogen Catalog Number:
AC26597

GenBank Accession Number:
BC008250

GeneID (NCBI):
23474

Full Name:
ethylmalonic encephalopathy 1

Calculated MW:
28 kDa

Observed MW:
28 kDa

Recommended Dilutions:

WB 1:500-1:2000

IHC 1:50-1:500

Applications

Tested Applications:

IHC, WB, ELISA

Species Specificity:

Human

Note: suggested antigen retrieval with TE buffer pH 9.0; (*) Alternatively, antigen retrieval may be performed with citrate buffer pH 6.0

Positive Controls:

WB : BGC-823 cells;

IHC : human liver tissue; human colon cancer tissue

Background Information

ETHE1, a gene encoding a b-lactamase-like, iron-coordinating metalloprotein, is mutated in ethylmalonic encephalopathy. In humans, ETHE1 gene is proved to encode the SDO in mitochondria and its mutations lead to a fatal autosomal recessive mitochondrial disease: ethylmalonic encephalopathy.

Notable Publications

Author	Pubmed ID	Journal	Application
--------	-----------	---------	-------------

Storage

Storage:

Store at -20°C. Stable for one year after shipment.

Storage Buffer:

PBS with 0.1% sodium azide and 50% glycerol pH 7.3.

Aliquoting is unnecessary for -20°C storage

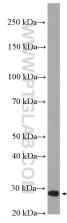
For technical support and original validation data for this product please contact:

T: 1 (888) 4PTGLAB (1-888-478-4522) (toll free in USA), or 1(312) 455-8498 (outside USA)

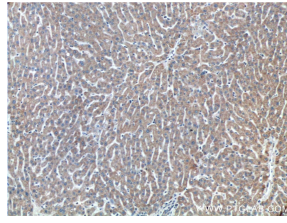
E: proteintech@ptglab.com
W: ptglab.com

This product is exclusively available under Proteintech Group brand and is not available to purchase from any other manufacturer.

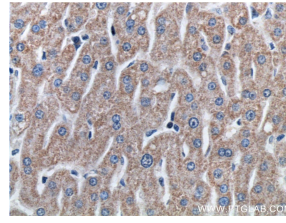
Selected Validation Data



BGC-823 cells were subjected to SDS PAGE followed by western blot with 27786-1-AP (ETHE1 antibody) at dilution of 1:1000 incubated at room temperature for 1.5 hours



Immunohistochemistry of paraffin-embedded human liver tissue slide using 27786-1-AP (ETHE1 antibody) at dilution of 1:200 (under 10x lens).



Immunohistochemistry of paraffin-embedded human liver tissue slide using 27786-1-AP (ETHE1 antibody) at dilution of 1:200 (under 40x lens).