

For Research Use Only

# LAMP2 Polyclonal antibody

Catalog Number: 27823-1-AP

16 Publications



## Basic Information

|  |  |   |
|--|--|---|
| <b>Catalog Number:</b><br>27823-1-AP   | <b>GenBank Accession Number:</b><br>BC002965                 | <b>Purification Method:</b><br>Antigen affinity purification        |
| <b>Size:</b><br>150ul, Concentration: 1000 µg/ml by Nanodrop and 467 µg/ml by Bradford method using BSA as the standard; | <b>GeneID (NCBI):</b><br>3920                                | <b>Recommended Dilutions:</b><br>WB 1:1000-1:4000<br>IHC 1:50-1:500 |
| <b>Source:</b><br>Rabbit   | <b>Full Name:</b><br>lysosomal-associated membrane protein 2 |   |
| <b>Isotype:</b><br>IgG   | <b>Calculated MW:</b><br>45 kDa                              |   |
| <b>Immunogen Catalog Number:</b><br>AG27183  | <b>Observed MW:</b><br>120 kDa                               |   |

## Applications

### Tested Applications:

IHC, WB, ELISA

### Cited Applications:

IF, IHC, WB

### Species Specificity:

Human, Pig

### Cited Species:

human, pig

**Note-IHC: suggested antigen retrieval with TE buffer pH 9.0; (\*) Alternatively, antigen retrieval may be performed with citrate buffer pH 6.0**

### Positive Controls:

WB : HepG2 cells, Jurkat cells, pig liver tissue, human placenta tissue

IHC : human liver tissue, human lung cancer tissue

## Background Information

Lysosomal-associated membrane protein 2 (LAMP2, synonyms: LAMPB, CD107b) is a member of a family of membrane glycoproteins. This glycoprotein provides selectins with carbohydrate ligands. LAMP2 may play a role in tumor cell metastasis. It may also function in the protection, maintenance, and adhesion of the lysosome. Prior to posttranslational modification, LAMP2 is a ~45 kDa polypeptide. Mature, functional LAMP2 is extensively glycosylated with a variety of different N linked and O linked oligosaccharides.

## Notable Publications

| Author        | Pubmed ID | Journal               | Application |
|---------------|-----------|-----------------------|-------------|
| Angke Zhang   | 32999030  | J Virol               | IF          |
| Hanghai Zeng  | 34530854  | J Neuroinflammation   | IF          |
| Minghui Chang | 30326943  | J Exp Clin Cancer Res | WB          |

## Storage

### Storage:

Store at -20°C. Stable for one year after shipment.

### Storage Buffer:

PBS with 0.02% sodium azide and 50% glycerol pH 7.3.

Aliquoting is unnecessary for -20°C storage

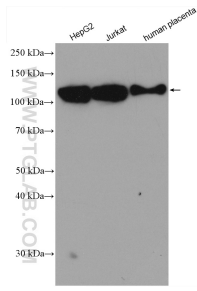
For technical support and original validation data for this product please contact:

T: 1 (888) 4PTGLAB (1-888-478-4522) (toll free in USA), or 1(312) 455-8498 (outside USA)

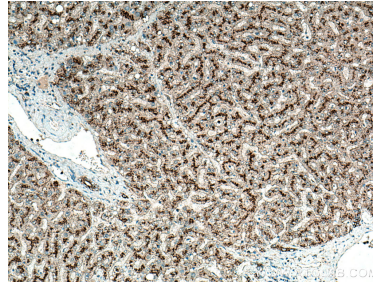
E: proteintech@ptglab.com  
W: ptglab.com

**This product is exclusively available under Proteintech Group brand and is not available to purchase from any other manufacturer.**

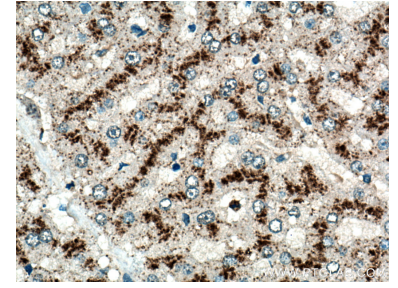
## Selected Validation Data



Various lysates were subjected to SDS PAGE followed by western blot with 27823-1-AP (LAMP2 antibody) at dilution of 1:2000 incubated at room temperature for 1.5 hours.



Immunohistochemical analysis of paraffin-embedded human liver tissue slide using 27823-1-AP (LAMP2 antibody) at dilution of 1:200 (under 10x lens). Heat mediated antigen retrieval with Tris-EDTA buffer (pH 9.0).



Immunohistochemical analysis of paraffin-embedded human liver tissue slide using 27823-1-AP (LAMP2 antibody) at dilution of 1:200 (under 40x lens). Heat mediated antigen retrieval with Tris-EDTA buffer (pH 9.0).