

For Research Use Only

ABCC6 Polyclonal ANTIBODY



Catalog Number: 27848-1-AP **1 Publications**

Basic Information

Catalog Number: 27848-1-AP	GenBank Accession Number: BC131732	Purification Method: Antigen affinity purification
Size: 150UL, Concentration: 333 µg/ml by Bradford method using BSA as the standard;	GeneID (NCBI): 368	Recommended Dilutions: WB 1:500-1:2000 IHC 1:50-1:500
Source: Rabbit	Full Name: ATP-binding cassette, sub-family C (CFTR/MRP), member 6	
Isotype: IgG	Calculated MW: 1503 aa, 165 kDa	
Immunogen Catalog Number: AG18640	Observed MW: 165 kDa and 96 kDa	

Applications

Tested Applications: IHC, WB, ELISA	Positive Controls: WB: mouse liver tissue, IHC: mouse liver tissue,
Cited Applications: WB	
Species Specificity: Human, Mouse	
Cited Species: human	
Note-IHC: suggested antigen retrieval with TE buffer pH 9.0; (*) Alternatively, antigen retrieval may be performed with citrate buffer pH 6.0	

Background Information

The ATP-binding cassette transporter 6 (ABCC6) gene, also named as MRP6, is a cellular transmembrane protein transporter and belongs to ATP-binding cassette (ABC) family. ABCC6 is an ATP-dependent transporter contains two ATP-binding domains. It is mainly found in the liver, the proximal tubules of the kidneys and the intestines. ABCC6 is involved in a pathway of extracellular nucleotide metabolism and the regulation of tissue calcification. Mutations of ABCC6 leads to pseudoxanthoma elasticum (PXE) which is a rare autosomal recessive disorder. Mutations of ABCC6 can also lead generalized arterial calcification of infancy-2 (GACI2). 27848-1-AP detects two isoforms of ABCC6 protein around 165 kDa and 96 kDa in SDS-PAGE. (PMID:28891970, 29709427, 29662086, 15888484)

Notable Publications

Author	Pubmed ID	Journal	Application
Hao Wang	31289473	Oncol Lett	WB

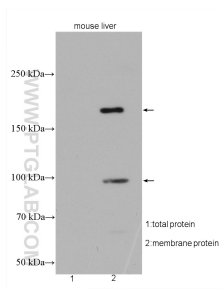
Storage

Storage:
Store at -20°C. Stable for one year after shipment.
Storage Buffer:
PBS with 0.1% sodium azide and 50% glycerol pH 7.3.
Aliquoting is unnecessary for -20°C storage

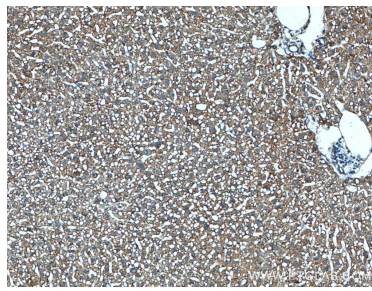
For technical support and original validation data for this product please contact:
T: 1 (888) 4PTGLAB (1-888-478-4522) (toll free in USA), or 1(312) 455-8498 (outside USA)
E: proteintech@ptglab.com
W: ptglab.com

This product is exclusively available under Proteintech Group brand and is not available to purchase from any other manufacturer.

Selected Validation Data



mouse brain tissue were subjected to SDS PAGE followed by western blot with 27848-1-AP (ABCC6 antibody) at dilution of 1:2000 incubated at room temperature for 1.5 hours.



Immunohistochemical analysis of paraffin-embedded mouse liver tissue slide using 27848-1-AP (ABCC6 antibody) at dilution of 1:200 (under 10x lens. Heat mediated antigen retrieval with Tris-EDTA buffer (pH 9.0).