

For Research Use Only

# PBLD Polyclonal ANTIBODY

Catalog Number: 27891-1-AP



## Basic Information

Catalog Number:  
27891-1-AP

Size:  
60 µg/150 µl

Source:  
Rabbit

Isotype:  
IgG

Purification Method:  
Antigen affinity purification

Immunogen Catalog Number:  
AG23591

GenBank Accession Number:  
BC009738

GeneID (NCBI):  
64081

Full Name:  
phenazine biosynthesis-like protein domain  
containing

Calculated MW:

Observed MW:  
30-32 kDa

Recommended Dilutions:

WB 1:1000-1:5000

IHC 1:300-1:1200

## Applications

Tested Applications:

IHC, WB, ELISA

Species Specificity:

Human, Mouse

**Note: suggested antigen retrieval with TE buffer pH 9.0; (\*) Alternatively, antigen retrieval may be performed with citrate buffer pH 6.0**

Positive Controls:

WB : mouse liver tissue; mouse kidney tissue

IHC : human kidney tissue;

## Background Information

### Notable Publications

Author	Pubmed ID	Journal	Application
--------	-----------	---------	-------------

## Storage

Storage:

Store at -20°C. Stable for one year after shipment.

Storage Buffer:

PBS with 0.1% sodium azide and 50% glycerol pH 7.3.

Aliquoting is unnecessary for -20°C storage

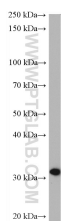
For technical support and original validation data for this product please contact:

T: 1 (888) 4PTGLAB (1-888-478-4522) (toll free in USA), or 1(312) 455-8498 (outside USA)

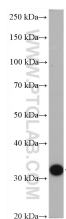
E: [proteintech@ptglab.com](mailto:proteintech@ptglab.com)  
W: [ptglab.com](http://ptglab.com)

This product is exclusively available under Proteintech Group brand and is not available to purchase from any other manufacturer.

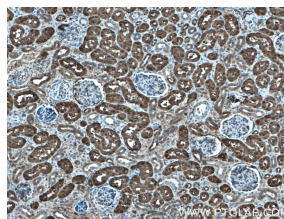
## Selected Validation Data



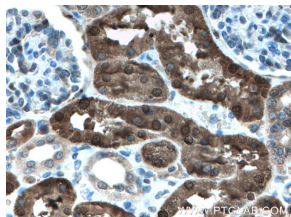
mouse kidney tissue were subjected to SDS PAGE followed by western blot with 27891-1-AP (PBLD antibody) at dilution of 1:2500 incubated at room temperature for 1.5 hours



mouse liver tissue were subjected to SDS PAGE followed by western blot with 27891-1-AP (PBLD antibody) at dilution of 1:2500 incubated at room temperature for 1.5 hours



Immunohistochemistry of paraffin-embedded human kidney tissue slide using 27891-1-AP (PBLD antibody) at dilution of 1:600 (under 10x lens) heat mediated antigen retrieved with Tris-EDTA buffer(pH9).



Immunohistochemistry of paraffin-embedded human kidney tissue slide using 27891-1-AP (PBLD antibody) at dilution of 1:600 (under 40x lens) heat mediated antigen retrieved with Tris-EDTA buffer(pH9).