

For Research Use Only

Red fluorescent protein Polyclonal antibody



Catalog Number: 28063-1-AP

Basic Information

Catalog Number: 28063-1-AP	GenBank Accession Number: GeneID (NCBI):	Purification Method: Antigen affinity purification
Size: 150ul , Concentration: 800 µg/ml by Nanodrop;	Full Name: Calculated MW: 26 kDa	Recommended Dilutions: WB 1:500-1:1000
Source: Rabbit		
Isotype: IgG		
Immunogen Catalog Number: AG27893		

Applications

Tested Applications: WB, ELISA	Positive Controls: WB : Transfected HEK-293 cells,
Species Specificity: Recombinant Protein, Parascyonis actinostoloides	

Background Information

Red fluorescent protein eqFP611, also named as GFP-like chromoprotein and RFP, is a pigment protein from Parascyonis actinostoloides. It can be used as a fluorescent protein tag. This antibody can detect the RFP tagged protein.

Storage

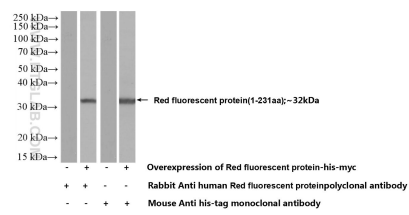
Storage:
Store at -20°C. Stable for one year after shipment.
Storage Buffer:
PBS with 0.02% sodium azide and 50% glycerol pH 7.3.
Aliquoting is unnecessary for -20°C storage

*** 20ul sizes contain 0.1% BSA

For technical support and original validation data for this product please contact:
T: 1 (888) 4PTGLAB (1-888-478-4522) (toll free in USA), or 1(312) 455-8498 (outside USA)
E: proteintech@ptglab.com
W: ptglab.com

This product is exclusively available under Proteintech Group brand and is not available to purchase from any other manufacturer.

Selected Validation Data



WB result of Red fluorescent protein antibody (28063-1-AP; 1:1000; room temperature for 1.5 hours) with negative control and Red fluorescent protein overexpressed Transfected HEK-293 cells.