

For Research Use Only

KL Polyclonal antibody

Catalog Number: 28100-1-AP

27 Publications



Basic Information

Catalog Number:

28100-1-AP

Size:

150ul, Concentration: 800 ug/ml by Nanodrop;

Source:

Rabbit

Isotype:

IgG

Immunogen Catalog Number:

AG27759

GenBank Accession Number:

NM_004795

GeneID (NCBI):

9365

UNIPROT ID:

Q9UEF7

Full Name:

klotho

Calculated MW:

116 kDa

Observed MW:

62 kDa, 130 kDa

Purification Method:

Antigen affinity purification

Recommended Dilutions:

WB: 1:500-1:2000

IP: 0.5-4.0 ug for 1.0-3.0 mg of total protein lysate

IHC: 1:50-1:500

Applications

Tested Applications:

WB, IP, IHC, ELISA

Cited Applications:

WB, IHC, IF

Species Specificity:

Human, Mouse, Rat

Cited Species:

human, mouse, rat

Note-IHC: suggested antigen retrieval with TE buffer pH 9.0; (*) Alternatively, antigen retrieval may be performed with citrate buffer pH 6.0

Positive Controls:

WB : mouse kidney tissue, rat kidney tissue

IP : mouse kidney tissue,

IHC : human kidney tissue, mouse brain tissue

Notable Publications

Author	Pubmed ID	Journal	Application
Li Lin	36325267	Genet Res (Camb)	WB
Shengnan Zhou	36277690	Front Endocrinol (Lausanne)	WB
Hao Meng	34807408	Hum Cell	WB

Storage

Storage:

Store at -20°C. Stable for one year after shipment.

Storage Buffer:

PBS with 0.02% sodium azide and 50% glycerol, pH7.3

Aliquoting is unnecessary for -20°C storage

*** 20ul sizes contain 0.1% BSA

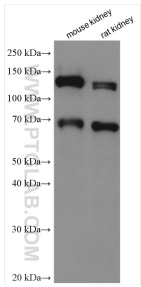
For technical support and original validation data for this product please contact:

T: 1 (888) 4PTGLAB (1-888-478-4522) (toll free in USA), or 1(312) 455-8498 (outside USA)

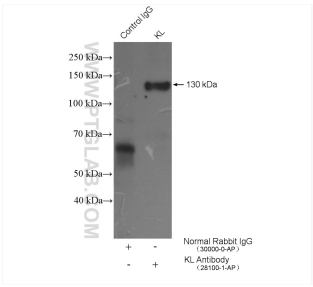
E: proteintech@ptglab.com
W: ptglab.com

This product is exclusively available under Proteintech Group brand and is not available to purchase from any other manufacturer.

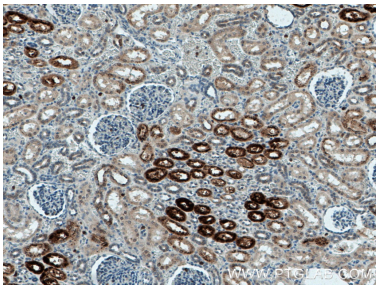
Selected Validation Data



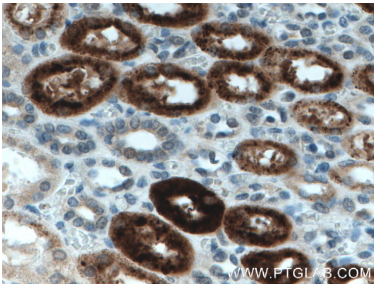
Various lysates were subjected to SDS PAGE followed by western blot with 28100-1-AP (KL antibody) at dilution of 1:1000 incubated at room temperature for 1.5 hours.



IP result of anti-KL (IP:28100-1-AP, 4ug; Detection:28100-1-AP 1:300) with mouse kidney tissue lysate 4000 ug.



Immunohistochemical analysis of paraffin-embedded human kidney tissue slide using 28100-1-AP (KL antibody) at dilution of 1:200 (under 10x lens. Heat mediated antigen retrieval with Tris-EDTA buffer (pH 9.0).



Immunohistochemical analysis of paraffin-embedded human kidney tissue slide using 28100-1-AP (KL antibody) at dilution of 1:200 (under 40x lens. Heat mediated antigen retrieval with Tris-EDTA buffer (pH 9.0).