

For Research Use Only

TMEM192 Polyclonal antibody

Catalog Number: 28263-1-AP

2 Publications



Basic Information

Catalog Number:

28263-1-AP

Size:

150ul, Concentration: 700 ug/ml by Nanodrop and 367 ug/ml by Bradford method using BSA as the standard;

Source:

Rabbit

Isotype:

IgG

Immunogen Catalog Number:

AG27576

GenBank Accession Number:

BC036301

GeneID (NCBI):

201931

UNIPROT ID:

Q8IY95

Full Name:

transmembrane protein 192

Observed MW:

30 kDa

Purification Method:

Antigen affinity purification

Recommended Dilutions:

WB 1:1000-1:4000

IHC 1:50-1:500

Applications

Tested Applications:

WB, IHC, ELISA

Cited Applications:

WB, IHC, IP

Species Specificity:

Human, mouse

Cited Species:

human

Note-IHC: suggested antigen retrieval with TE buffer pH 9.0; (*) Alternatively, antigen retrieval may be performed with citrate buffer pH 6.0

Positive Controls:

WB : HeLa cells, U2OS cells

IHC : human breast cancer tissue, human liver cancer tissue, human lung cancer tissue, human prostate cancer tissue, mouse cerebellum tissue

Background Information

Transmembrane protein 192 (TMEM192) has been previously identified in proteomic analyses of lysosomal membranes. TMEM192 shows a wide expression pattern in mouse tissues. Interestingly, TMEM192 was found to be highly expressed in tumor cell lines, while it was not expressed or detected at low levels in normal cell lines (PMID: 22736246). TMEM192 can be detected as 30 kDa.

Notable Publications

Author	Pubmed ID	Journal	Application
Na Yeon Park	39875384	Nat Commun	WB, IP
Yang Wang	37211762	Mol Ther	IHC

Storage

Storage:

Store at -20°C. Stable for one year after shipment.

Storage Buffer:

PBS with 0.02% sodium azide and 50% glycerol, pH7.3

Aliquoting is unnecessary for -20°C storage

*** 20ul sizes contain 0.1% BSA

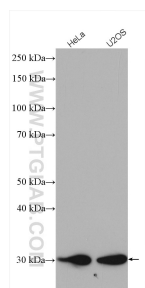
For technical support and original validation data for this product please contact:

T: 1 (888) 4PTGLAB (1-888-478-4522) (toll free in USA), or 1(312) 455-8498 (outside USA)

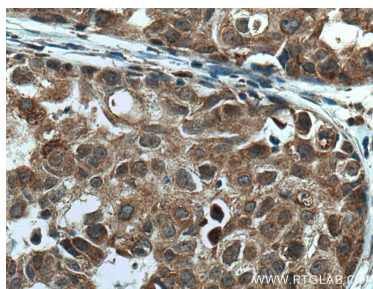
E: proteintech@ptglab.com
W: ptglab.com

This product is exclusively available under Proteintech Group brand and is not available to purchase from any other manufacturer.

Selected Validation Data



Various lysates were subjected to SDS PAGE followed by western blot with 28263-1-AP (TMEM192 antibody) at dilution of 1:2000 incubated at room temperature for 1.5 hours.



Immunohistochemical analysis of paraffin-embedded human breast cancer tissue slide using 28263-1-AP (TMEM192 antibody) at dilution of 1:200 (under 40x lens). Heat mediated antigen retrieval with Tris-EDTA buffer (pH 9.0).