

For Research Use Only

ADRB1 Polyclonal antibody

Catalog Number: 28323-1-AP

5 Publications



Basic Information

Catalog Number: 28323-1-AP	GenBank Accession Number: NM_000684	Purification Method: Antigen affinity purification
Size: 150ul , Concentration: 650 ug/ml by Nanodrop;	GeneID (NCBI): 153	Recommended Dilutions: WB 1:1000-1:4000 IHC 1:50-1:500
Source: Rabbit	UNIPROT ID: P08588	
Isotype: IgG	Full Name: adrenergic, beta-1-, receptor	
Immunogen Catalog Number: AG28223	Calculated MW: 51 kDa	
	Observed MW: 49 kDa	

Applications

Tested Applications: WB, IHC, ELISA	Positive Controls: WB : mouse heart tissue, rat heart tissue IHC : mouse lung tissue,
Cited Applications: WB, IHC	
Species Specificity: human, mouse, rat	
Cited Species: human, mouse, rat	
Note-IHC: suggested antigen retrieval with TE buffer pH 9.0; (*) Alternatively, antigen retrieval may be performed with citrate buffer pH 6.0	

Background Information

ADRB1 (adrenergic receptor beta 1), a member of the G protein-coupled receptor (GPCR) superfamily, responds to catecholamine stimulation. ADRB1 is the predominant subtype expressed in the heart and mediates increases in inotropy and chronotropy when stimulated. ADRB1 mediates a wide range of cardiovascular physiological responses and has been of great interest to researchers as a therapeutic target for cardiovascular diseases. Moreover, three subtypes of ADRBs (ADRB1, ADRB2, and ADRB3) are encoded by three separate genes (PMID:16636683; 33372534; 33593484).

Notable Publications

Author	Pubmed ID	Journal	Application
Hu Xu	39921269	Adv Sci (Weinh)	WB
Leyi Zhang	39630109	Adv Sci (Weinh)	IHC
Xingcheng Lin	37927415	Oncol Lett	WB

Storage

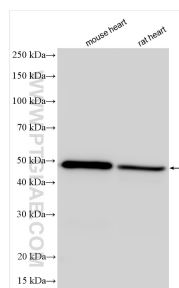
Storage:
Store at -20°C. Stable for one year after shipment.
Storage Buffer:
PBS with 0.02% sodium azide and 50% glycerol, pH7.3
Aliquoting is unnecessary for -20°C storage

*** 20ul sizes contain 0.1% BSA

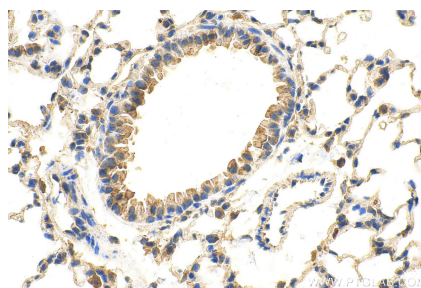
For technical support and original validation data for this product please contact:
T: 1 (888) 4PTGLAB (1-888-478-4522) (toll free in USA), or 1(312) 455-8498 (outside USA)
E: proteintech@ptglab.com
W: ptglab.com

This product is exclusively available under Proteintech Group brand and is not available to purchase from any other manufacturer.

Selected Validation Data



Various lysates were subjected to SDS PAGE followed by western blot with 28323-1-AP (ADRB1 antibody) at dilution of 1:2000 incubated at room temperature for 1.5 hours.



Immunohistochemical analysis of paraffin-embedded mouse lung tissue slide using 28323-1-AP (ADRB1 antibody) at dilution of 1:200 (under 40x lens). Heat mediated antigen retrieval with Tris-EDTA buffer (pH 9.0).