

For Research Use Only

SLC38A1 Polyclonal antibody

Catalog Number: 28632-1-AP

Featured Product

1 Publications



Basic Information

Catalog Number:

28632-1-AP

Size:

150ul, Concentration: 500 ug/ml by Nanodrop;

Source:

Rabbit

Isotype:

IgG

Immunogen Catalog Number:

AG30088

GenBank Accession Number:

BC010620

GeneID (NCBI):

81539

UNIPROT ID:

Q9H2H9

Full Name:

solute carrier family 38, member 1

Calculated MW:

487 aa, 54 kDa

Observed MW:

54 kDa, 60-70 kDa

Purification Method:

Antigen affinity purification

Recommended Dilutions:

WB 1:2000-1:14000

IHC 1:50-1:500

Applications

Tested Applications:

WB, IHC, ELISA

Cited Applications:

WB, IHC

Species Specificity:

Human, mouse

Cited Species:

human, mouse

Note-IHC: suggested antigen retrieval with TE buffer pH 9.0; (*) Alternatively, antigen retrieval may be performed with citrate buffer pH 6.0

Positive Controls:

WB: A549 cells, mouse brain tissue, mouse skeletal muscle tissue

IHC: mouse brain tissue,

Background Information

SLC38A1 (Sodium-coupled neutral amino acid transporter 1), is also named as SNAT1, which is a symporter that cotransports short-chain neutral amino acids and sodium ions from the extracellular to the intracellular side of the cell membrane (PMID:20599747, PMID:10891391). Inhibition of SLC38A1 reduced tumor growth, cellular migration, invasion, and induced senescence in melanoma cells (PMID:35565278). SLC38A1 was identified as a positive regulator of mTORC1 in neurons, which promoted ischemic brain damage by mTOR-autophagy system (PMID:31552299). SLC38A1 is mainly expressed in brain and placenta.

Notable Publications

Author	Pubmed ID	Journal	Application
Shuang Li	38382691	Cell Signal	WB, IHC

Storage

Storage:

Store at -20°C. Stable for one year after shipment.

Storage Buffer:

PBS with 0.02% sodium azide and 50% glycerol pH 7.3.

Aliquoting is unnecessary for -20°C storage

*** 20ul sizes contain 0.1% BSA

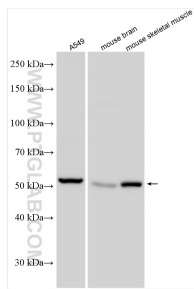
For technical support and original validation data for this product please contact:

T: 1 (888) 4PTGLAB (1-888-478-4522) (toll free in USA), or 1(312) 455-8498 (outside USA)

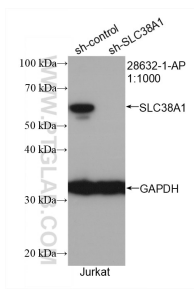
E: proteintech@ptglab.com
W: ptglab.com

This product is exclusively available under Proteintech Group brand and is not available to purchase from any other manufacturer.

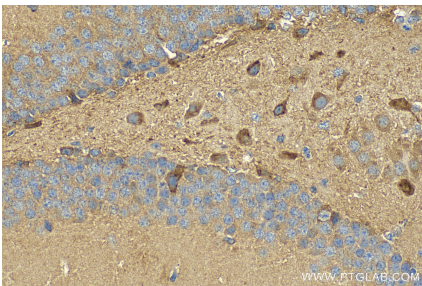
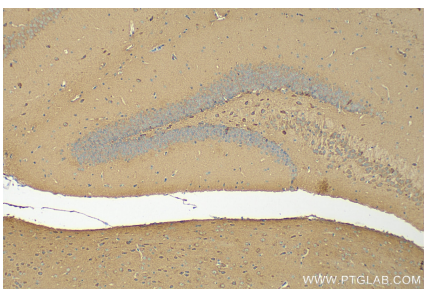
Selected Validation Data



Various lysates were subjected to SDS PAGE followed by western blot with 28632-1-AP (SLC38A1 antibody) at dilution of 1:7000 incubated at room temperature for 1.5 hours.



WB result of SLC38A1 antibody (28632-1-AP; 1:1000; incubated at room temperature for 1.5 hours) with sh-Control and sh-SLC38A1 transfected Jurkat cells.



Immunohistochemical analysis of paraffin-embedded mouse brain tissue slide using 28632-1-AP (SLC38A1 antibody) at dilution of 1:200 (under 40x lens). Heat mediated antigen retrieval with Tris-EDTA buffer (pH 9.0).