

For Research Use Only

# Fibrillin 1 Polyclonal antibody

Catalog Number: 29425-1-AP

1 Publications



## Basic Information

<b>Catalog Number:</b> 29425-1-AP	<b>GenBank Accession Number:</b> BC146854	<b>Purification Method:</b> Antigen affinity purification
<b>Size:</b> 150ul , Concentration: 550 ug/ml by Nanodrop;	<b>GeneID (NCBI):</b> 2200	<b>Recommended Dilutions:</b> WB 1:500-1:2000
<b>Source:</b> Rabbit	<b>UNIPROT ID:</b> P35555	<b>IHC 1:50-1:500</b>
<b>Isotype:</b> IgG	<b>Full Name:</b> fibrillin 1	<b>IF/ICC 1:200-1:800</b>
<b>Immunogen Catalog Number:</b> AG30283	<b>Observed MW:</b> 350 kDa	

## Applications

<b>Tested Applications:</b> WB, IHC, IF/ICC, ELISA	<b>Positive Controls:</b>
<b>Cited Applications:</b> WB, ColP	<b>WB :</b> HeLa cells,
<b>Species Specificity:</b> human	<b>IHC :</b> human endometrial cancer tissue, human normal colon
<b>Cited Species:</b> mouse	<b>IF/ICC :</b> A431 cells,
<b>Note-IHC: suggested antigen retrieval with TE buffer pH 9.0; (*) Alternatively, antigen retrieval may be performed with citrate buffer pH 6.0</b>	

## Background Information

Fibrillin 1 is a 350 kDa large extracellular matrix glycoprotein that formed thread-like microfibril filaments, which provided structural support for tissues, formed elastic fibers in the skin and vessels, regulated the availability of the transforming growth factor beta (TGF- $\beta$ ) protein, and modulated the microenvironment. Fibrillin 1 contains a large number of cysteine-rich epidermal growth factor (EGF)- like domains, most capable of binding calcium ions (cbEGF-like), and a few motifs homologous to the binding protein for transforming growth factor beta (TGF $\beta$ 1-BP)- like module (PMID: 29220879, PMID: 35234370).

## Notable Publications

Author	Pubmed ID	Journal	Application
Dunpeng Cai	39120288	Cells	WB, ColP

## Storage

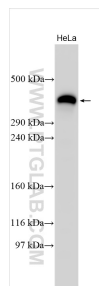
**Storage:**  
Store at -20°C. Stable for one year after shipment.  
**Storage Buffer:**  
PBS with 0.02% sodium azide and 50% glycerol pH 7.3.  
**Aliquoting is unnecessary for -20°C storage**

\*\*\* 20ul sizes contain 0.1% BSA

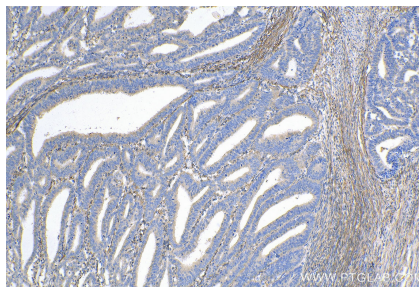
For technical support and original validation data for this product please contact:  
T: 1 (888) 4PTGLAB (1-888-478-4522) (toll free in USA), or 1(312) 455-8498 (outside USA)  
E: proteintech@ptglab.com  
W: ptglab.com

This product is exclusively available under Proteintech Group brand and is not available to purchase from any other manufacturer.

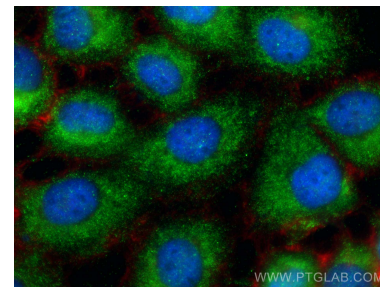
## Selected Validation Data



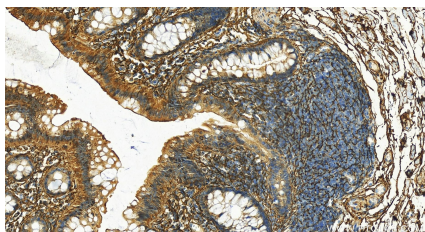
HeLa cells were subjected to Tris-acetate gel system followed by western blot with 29425-1-AP (Fibrillin 1 antibody) at dilution of 1:1000 incubated at room temperature for 1.5 hours.



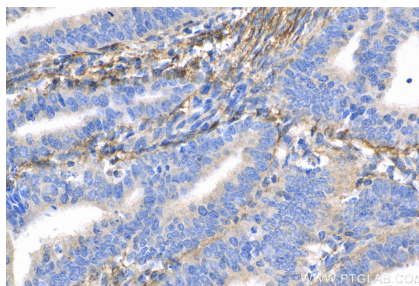
Immunohistochemical analysis of paraffin-embedded human endometrial cancer tissue slide using 29425-1-AP (Fibrillin 1 antibody) at dilution of 1:200 (under 10x lens). Heat mediated antigen retrieval with Tris-EDTA buffer (pH 9.0).



Immunofluorescent analysis of (-20°C Ethanol) fixed A431 cells using Fibrillin 1 antibody (29425-1-AP) at dilution of 1:400 and CoraLite®488-Conjugated AffiniPure Goat Anti-Rabbit IgG(H+L) (SA00013-2), CL594-phalloidin (red).



Immunohistochemical analysis of paraffin-embedded human colon tissue slide using 29425-1-AP (Fibrillin 1 antibody) at dilution of 1:200 (under 20x lens). Heat mediated antigen retrieval with Tris-EDTA buffer (pH 9.0).



Immunohistochemical analysis of paraffin-embedded human endometrial cancer tissue slide using 29425-1-AP (Fibrillin 1 antibody) at dilution of 1:200 (under 40x lens). Heat mediated antigen retrieval with Tris-EDTA buffer (pH 9.0).