

For Research Use Only

SEL1L Polyclonal antibody

Catalog Number: 29801-1-AP



Basic Information

Catalog Number: 29801-1-AP	GenBank Accession Number: NM_005065	Purification Method: Antigen affinity purification
Size: 150ul , Concentration: 600 ug/ml by Nanodrop;	GeneID (NCBI): 6400	Recommended Dilutions: WB 1:1000-1:8000 IHC 1:50-1:500
Source: Rabbit	UNIPROT ID: Q9UBV2	
Isotype: IgG	Full Name: sel-1 suppressor of lin-12-like (C. elegans)	
Immunogen Catalog Number: AG32178	Calculated MW: 89 kDa	
	Observed MW: 89 kDa	

Applications

Tested Applications: WB, IHC, ELISA	Positive Controls:
Species Specificity: human, mouse, rat	WB : HepG2 cells, BxPC-3 cells, HEK-293T cells, mouse kidney tissue, rat liver tissue
Note-IHC: suggested antigen retrieval with TE buffer pH 9.0; (*) Alternatively, antigen retrieval may be performed with citrate buffer pH 6.0	IHC : human intrahepatic cholangiocarcinoma tissue, human ovary cancer tissue

Background Information

SEL1L (Suppressor Enhancer Lin-12 Like) is an endoplasmic reticulum-resident transmembrane protein that plays a critical role in collagen metabolism. It has been identified as an intracellular rheostat controlling collagen turnover, which is the balance between collagen synthesis and degradation. The protein's luminal face contains a Fibronectin-2 (FN2) domain, which is known to bind collagen. SEL1L functions as a sensor of collagen biosynthesis and is necessary for the upregulation of MRC2 (mannose receptor, C-type 2), a collagen endocytic receptor that mediates the clearance of collagen.

Storage

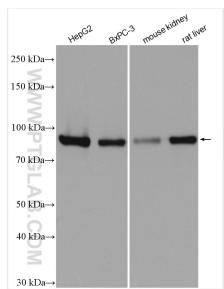
Storage:
Store at -20°C. Stable for one year after shipment.
Storage Buffer:
PBS with 0.02% sodium azide and 50% glycerol
Aliquoting is unnecessary for -20°C storage

*** 20ul sizes contain 0.1% BSA

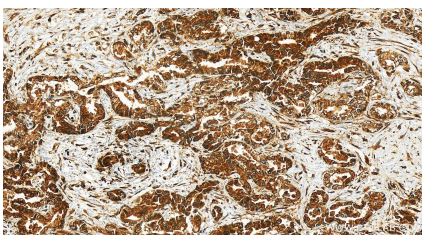
For technical support and original validation data for this product please contact:
T: 1 (888) 4PTGLAB (1-888-478-4522) (toll free in USA), or 1(312) 455-8498 (outside USA)
E: proteintech@ptglab.com
W: ptglab.com

This product is exclusively available under Proteintech Group brand and is not available to purchase from any other manufacturer.

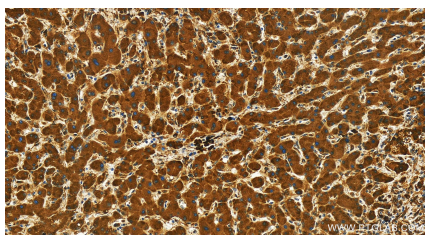
Selected Validation Data



Various lysates were subjected to SDS PAGE followed by western blot with 29801-1-AP (SEL1L antibody) at dilution of 1:4000 incubated at room temperature for 1.5 hours.



Immunohistochemical analysis of paraffin-embedded human intrahepatic cholangiocarcinoma tissue slide using 29801-1-AP (SEL1L antibody) at dilution of 1:200 (under 20x lens). Heat mediated antigen retrieval with Tris-EDTA buffer (pH 9.0).



Immunohistochemical analysis of paraffin-embedded human intrahepatic cholangiocarcinoma tissue slide using 29801-1-AP (SEL1L antibody) at dilution of 1:200 (under 20x lens). Heat mediated antigen retrieval with Tris-EDTA buffer (pH 9.0).