

For Research Use Only

ENT1 Polyclonal antibody

Catalog Number: 29862-1-AP

Featured Product

3 Publications



Basic Information

Catalog Number:

29862-1-AP

Size:

150ul, Concentration: 500 ug/ml by Nanodrop;

Source:

Rabbit

Isotype:

IgG

Immunogen Catalog Number:

AG32003

GenBank Accession Number:

NM_001372327.1

GeneID (NCBI):

2030

UNIPROT ID:

Q99808

Full Name:

solute carrier family 29 (nucleoside transporters), member 1

Calculated MW:

50KD

Observed MW:

70 kDa

Purification Method:

Antigen affinity purification

Recommended Dilutions:

WB 1:500-1:2000

IHC 1:50-1:500

Applications

Tested Applications:

WB, IHC, ELISA

Cited Applications:

WB, IF

Species Specificity:

human, mouse, rat

Cited Species:

human, mouse

Note-IHC: suggested antigen retrieval with TE buffer pH 9.0; (*) Alternatively, antigen retrieval may be performed with citrate buffer pH 6.0

Positive Controls:

WB : HCT 116 cells, HeLa cells, mouse heart tissue, rat liver tissue, mouse kidney tissue, mouse liver tissue

IHC : human colon cancer tissue, human lymphoma tissue

Background Information

ENT1 (equilibrative nucleoside transporter 1; also known as SLC29A1) is a ubiquitous protein located at the cell membrane and is a major transporter responsible for the cellular uptake and release of endogenous nucleosides such as adenosine, and nucleoside analogs used in chemotherapy. The predicted molecular weight of ENT1 is 50 kDa, while heavier 54-68 kDa band may be observed due to the glycosylation (PMID: 16448802, 11850433, 16111480). A smaller novel splice variant of the mouse ENT1 has also been identified, which generates a protein of 35-40 kDa (PMID: 18413666).

Notable Publications

Author	Pubmed ID	Journal	Application
Erwann Pain	39207736	Proc Natl Acad Sci U S A	IF
Rodnie Colón Ortiz	38200564	Fluids Barriers CNS	WB, IF
Shih-Yin Ho	37933097	Hippocampus	WB

Storage

Storage:

Store at -20°C. Stable for one year after shipment.

Storage Buffer:

PBS with 0.02% sodium azide and 50% glycerol pH 7.3.

Aliquoting is unnecessary for -20°C storage

*** 20ul sizes contain 0.1% BSA

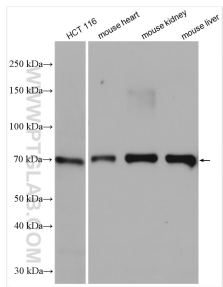
For technical support and original validation data for this product please contact:

T: 1 (888) 4PTGLAB (1-888-478-4522) (toll free in USA), or 1(312) 455-8498 (outside USA)

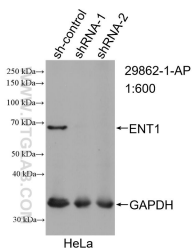
E: proteintech@ptglab.com
W: ptglab.com

This product is exclusively available under Proteintech Group brand and is not available to purchase from any other manufacturer.

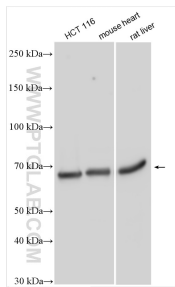
Selected Validation Data



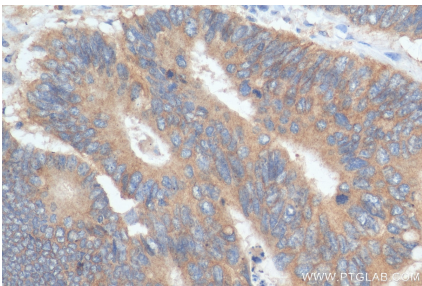
Various lysates were subjected to SDS PAGE followed by western blot with 29862-1-AP (ENT1 antibody) at dilution of 1:800 incubated at room temperature for 1.5 hours.



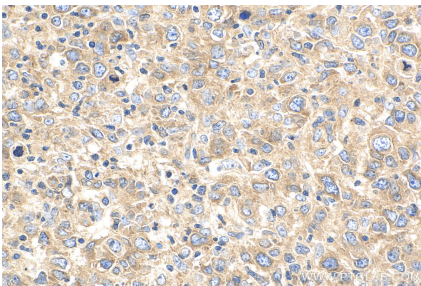
WB result of ENT1 antibody (29862-1-AP; 1:600; incubated at room temperature for 1.5 hours) with sh-Control and sh-ENT1 transfected HeLa cells.



Various lysates were subjected to SDS PAGE followed by western blot with 29862-1-AP (ENT1 antibody) at dilution of 1:1000 incubated at room temperature for 1.5 hours.



Immunohistochemical analysis of paraffin-embedded human colon cancer tissue slide using 29862-1-AP (ENT1 antibody) at dilution of 1:200 (under 40x lens). Heat mediated antigen retrieval with Tris-EDTA buffer (pH 9.0).



Immunohistochemical analysis of paraffin-embedded human lymphoma tissue slide using 29862-1-AP (ENT1 antibody) at dilution of 1:200 (under 40x lens). Heat mediated antigen retrieval with Tris-EDTA buffer (pH 9.0).