

For Research Use Only

GALR2 Polyclonal antibody

Catalog Number: 29909-1-AP



Basic Information

Catalog Number: 29909-1-AP	GenBank Accession Number: NM_003857	Purification Method: Antigen affinity purification
Size: 150ul , Concentration: 500 ug/ml by Nanodrop;	GeneID (NCBI): 8811	Recommended Dilutions: WB 1:1000-1:4000
Source: Rabbit	UNIPROT ID: O43603	IHC 1:50-1:500
Isotype: IgG	Full Name: galanin receptor 2	IF/ICC 1:50-1:500
Immunogen Catalog Number: AG31762	Calculated MW: 42KD	
	Observed MW: 42-50 kDa	

Applications

Tested Applications: WB, IHC, IF/ICC, ELISA	Positive Controls:
Species Specificity: human	WB : HepG2 cells, SMMC-7721 cells
Note-IHC: suggested antigen retrieval with TE buffer pH 9.0 ; (*) Alternatively, antigen retrieval may be performed with citrate buffer pH 6.0	IHC : human pancreas cancer tissue,
	IF/ICC : HepG2 cells,

Background Information

Galanin receptor type 2 (GALR2) is a receptor for galanin, GALP, and the hormone SPX1 (PMID:24517231). It is an important neuromodulator present in the brain, gastrointestinal system, and hypothalamo-pituitary axis. Activation of the GALR2 may protect the hippocampus from neuronal damage (PMID: 17263796). It is a 30-amino acid non-C-terminally amidated peptide that potently stimulates growth hormone secretion, inhibits cardiac vagal slowing of heart rate, abolishes sinus arrhythmia, and inhibits postprandial gastrointestinal motility. The activity of this receptor is mediated by G proteins that activate the phospholipase C/protein kinase C pathway (via G(q)) and that inhibits adenylyl cyclase. GALR2 has a calculated molecular weight of 42 kDa.

Storage

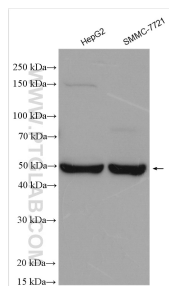
Storage:
Store at -20°C. Stable for one year after shipment.
Storage Buffer:
PBS with 0.02% sodium azide and 50% glycerol pH 7.3.
Aliquoting is unnecessary for -20°C storage

***** 20ul sizes contain 0.1% BSA**

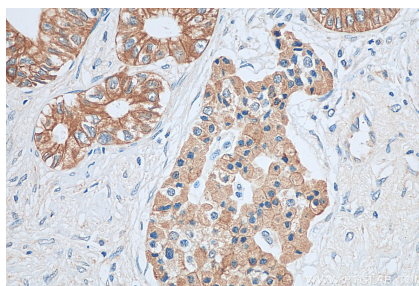
For technical support and original validation data for this product please contact:
T: 1 (888) 4PTGLAB (1-888-478-4522) (toll free in USA), or 1(312) 455-8498 (outside USA)
E: proteintech@ptglab.com
W: ptglab.com

This product is exclusively available under Proteintech Group brand and is not available to purchase from any other manufacturer.

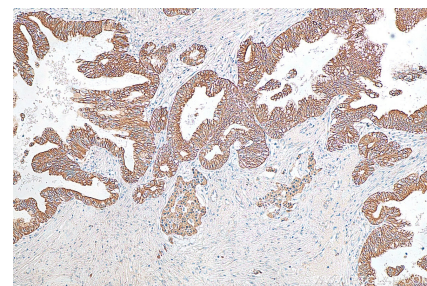
Selected Validation Data



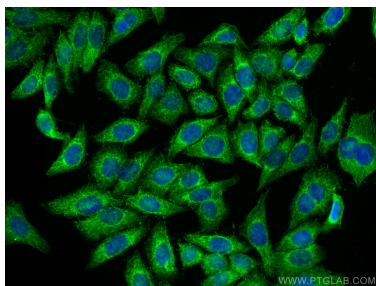
Various lysates were subjected to SDS PAGE followed by western blot with 29909-1-AP (GALR2 antibody) at dilution of 1:2000 incubated at room temperature for 1.5 hours.



Immunohistochemical analysis of paraffin-embedded human pancreas cancer tissue slide using 29909-1-AP (GALR2 antibody) at dilution of 1:200 (under 40x lens). Heat mediated antigen retrieval with Tris-EDTA buffer (pH 9.0).



Immunohistochemical analysis of paraffin-embedded human pancreas cancer tissue slide using 29909-1-AP (GALR2 antibody) at dilution of 1:200 (under 10x lens). Heat mediated antigen retrieval with Tris-EDTA buffer (pH 9.0).



Immunofluorescent analysis of (4% PFA) fixed HepG2 cells using GALR2 antibody (29909-1-AP) at dilution of 1:200 and CoraLite® 488-Conjugated AffiniPure Goat Anti-Rabbit IgG(H+L).