

For Research Use Only

RBPJ Polyclonal antibody

Catalog Number: 30044-1-AP

2 Publications



Basic Information

Catalog Number:

30044-1-AP

Size:

150ul, Concentration: 450 ug/ml by Nanodrop;

Source:

Rabbit

Isotype:

IgG

Immunogen Catalog Number:

AG32552

GenBank Accession Number:

BC064976

GeneID (NCBI):

3516

UNIPROT ID:

Q06330

Full Name:

recombination signal binding protein for immunoglobulin kappa J region

Calculated MW:

56 kDa

Observed MW:

~60 kDa

Purification Method:

Antigen affinity purification

Recommended Dilutions:

WB 1:500-1:2000

IP 0.5-4.0 ug for 1.0-3.0 mg of total

protein lysate

IHC 1:50-1:500

Applications

Tested Applications:

WB, IP, IHC, ELISA

Cited Applications:

IP

Species Specificity:

Human, mouse

Cited Species:

human

Positive Controls:

WB : HepG2 cells, MCF-7 cells, NIH/3T3 cells

IP : HepG2 cells,

IHC : human pancreas cancer tissue,

Note-IHC: suggested antigen retrieval with TE buffer pH 9.0; (*) Alternatively, antigen retrieval may be performed with citrate buffer pH 6.0

Background Information

RBPJ, also named as IGKJRB, IGKJRB1, RBPJ1, RBPSUH, NY-REN-30, CBF-1 and CSL, belongs to the Su(H) family. It is a transcriptional regulator that plays a central role in Notch signaling, a signaling pathway involved in cell-cell communication that regulates a broad spectrum of cell-fate determinations. RBPJ acts as a transcriptional repressor when it is not associated with Notch proteins. It is specifically binds to the immunoglobulin kappa-type J segment recombination signal sequence. RBPJ binds to the Runx3 promoter in the atrioventricular canal in vivo, and inhibition of Notch reduces RUNX3 expression in the cardiac cushion of embryonic hearts.

Notable Publications

Author	Pubmed ID	Journal	Application
Jiang Chang	40068596	Cancer Cell	IP
Morgane Fournier	39478150	EMBO Mol Med	IP

Storage

Storage:

Store at -20°C. Stable for one year after shipment.

Storage Buffer:

PBS with 0.02% sodium azide and 50% glycerol pH 7.3.

Aliquoting is unnecessary for -20°C storage

*** 20ul sizes contain 0.1% BSA

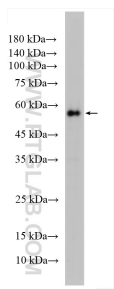
For technical support and original validation data for this product please contact:

T: 1 (888) 4PTGLAB (1-888-478-4522) (toll free in USA), or 1(312) 455-8498 (outside USA)

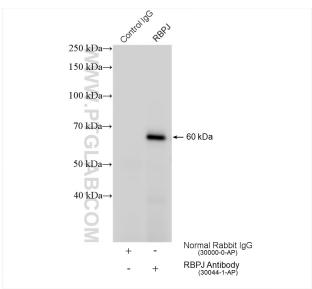
E: proteintech@ptglab.com
W: ptglab.com

This product is exclusively available under Proteintech Group brand and is not available to purchase from any other manufacturer.

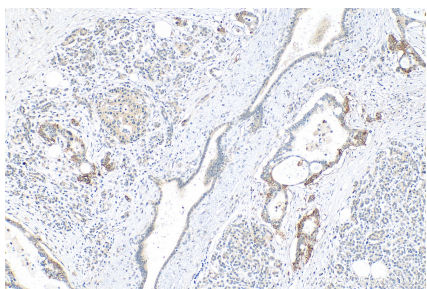
Selected Validation Data



HepG2 cells were subjected to SDS PAGE followed by western blot with 30044-1-AP (RBPJ antibody) at dilution of 1:1000 incubated at room temperature for 1.5 hours.



IP result of anti-RBPJ (IP:30044-1-AP, 4ug; Detection:30044-1-AP 1:1000) with HepG2 cells lysate 1080 ug.



Immunohistochemical analysis of paraffin-embedded human pancreas cancer tissue slide using 30044-1-AP (RBPJ) antibody at dilution of 1:200 (under 10x lens). Heat mediated antigen retrieval with Tris-EDTA buffer (pH 9.0).